



SERIES MICROSCOPE CATALOG

Select from our various configurations based on your specific inspection needs.
We offer four microscope series variations ELZ, SSZ, NA, and E-Series (COM)

www.scienscope.com

TABLE OF CONTENT

3	Introduction
4	ELZ Series
5	ELZ Binocular Systems
6	SSZ-II Series
7	SSZ-II Binocular Systems
8	NZ Series
9	NZ Series Binocular Systems
10	E-Series(CMO)
11	E-Series Microscope Configuration
12	E-Series Configuration Chart
13	E-Series 20° Systems
14	E-Series 0° - 45° Systems
15	VersaCam (CC-HDMI-CD2)
16	SmartCam-Ultra AF (CC-SMART-4K-AF)
17	SSZ-II Trinocular Systems
18	NZ Trinocular Systems
19	E-Series 20° Trinocular Systems
20	E-Series 0° - 45° Trinocular Systems

INTRODUCTION

Scienscope is an industrial (NDT) solution provider committed to the best price-to-performance ratio we can offer. In business since 1994, Scienscope has served all manufacturing areas in North America through a network of technical sales representatives and distributors. We aim to provide the most innovative and cost-effective solutions for our customers' inspection problems. We are continuously developing new products and software to meet your needs.

The Scienscope inspection division is the core of our business. Our product line extends from benchtop magnifiers, stereo zoom microscopes, video inspection systems, and video recognition systems to video measurement systems and measurement software. As well, Scienscope manufactures industrial cabinet-style micro focus X-Ray machines. We can give you a demo on-site or online. Don't hesitate to contact your local representatives or Scienscope directly for details.

Please visit our website, www.scienscope.com, for more product information and contacts. We appreciate the opportunity to do business with your company, and let us know how we can help.

Our microscopes are perfect for a wide range of applications:

- Electronics
- Medical Devices
- Automotive
- semiconductors
- Plastics
- Aerospace
- Micro-Stamping
- Precision Machining

- Perfect for doing:
- Macro Documentation
 - Measuring
 - Inspection and Documentation
 - Sharing your work remotely



ELZ SERIES

Mini Stereo Zoom Binocular Microscope

The ELZ microscope series is designed for entry-level users or companies that require good quality on a budget. High-performance optics and a small package deliver a great scope at a very affordable price.



HIGHLIGHTS

- Quality construction and optics
- Variety of accessories
- Cost-effective
- Great started microscope



Data Sheet / ELZ Body Specs

Microscope Body Zoom Range	0.7x - 3x
Magnification	7X-30X (w/10X eyepiece)
Zoom Ratio	01:04.3
Field of View	31.4mm - 7.3mm (w/ 10X eyepieces)
Work Distance	100MM
Dioptric Adjustment	±5
Interpupillary Adjustment	46 - 76mm
Eyepieces Inclination	60°
Microscope Ring Mount Diameter	76mm

COMPACT & COST EFFECTIVE

The quality of Scienscope's stereo zoom microscope series and optical design provides high-quality images with more outstanding flatness. The coatings on lens surfaces provide clear, bright, and high-contrast views of your most challenging applications.



Maintenance - Free

Anti-mold and air-tight sealed body design eliminates the need for regular maintenance and adds additional reliability to most working environments.



High Quality Optics

Based on the NZ series microscope construction, the ELZ surpasses many competitors in the compact category.



Upgradable System

Upgrades available on eyepieces, objectives, lenses, light sources, and many other microscope parts allow flexible adaptation to your changing workflow.

COMPACT PERFORMANCE

ELZ Binocular Optical Specs

Objective Lens	Eyepieces						Working Distance
	10x		15x		20x		
	MAG	FOV (mm)	MAG	FOV (mm)	MAG	FOV (mm)	
0.5x	3.5x- 15x	66.9- 15mm	5.3x- 22.5x	4.6- 11mm	7x-30x	36- 8.3mm	177mm
1x (Default)	7x-30x	31.4- 7.3mm	10.5x-45x	22.9- 5.3mm	14x-60x	17.9- 4.1mm	100mm
2x	14x-60x	16- 3.7mm	21x-90x	11.4 - 8mm	28x - 120x	9 -6mm	26mm

Optical Magnification Formula

Total Magnification = (Mag. of Eyepieces) X (Mag. of the objective zoom range on body) X (Mag/ of the objective lens)

ELZ BINOCULAR SYSTEMS

ELZ-PK1 System on Post Stand w/choice of Lighting

Package Contents

- ELZ Stereo Zoom Binocular
- 10x eyepieces
- ErgoPost Stand with 76mm focus rack

Available Packages with Choice of Lighting

- [ELZ-PK1-AN \(Fiber optic annular ring light guide\)](#)
- [ELZ-PK1-R3E \(New super-bright, low-profile LED ring light\)](#)
- [ELZ-PK1-R3 \(New high-intensity LED ring light with polarizer\)](#)
- [ELZ-PK1-E1 \(Quadrant compact LED ring light\)](#)



ELZ-PK2 System on Track Stand w/choice of Lighting

Package Contents

- ELZ Stereo Zoom Binocular
- 10x eyepieces
- ErgoTrack Stand with 76mm focus rack

Available Packages with Choice of Lighting

- [ELZ-PK2-AN \(Fiber optic annular ring light guide\)](#)
- [ELZ-PK2-R3E \(New super-bright, low-profile LED ring light\)](#)
- [ELZ-PK2-R3 \(New high-intensity LED ring light with polarizer\)](#)
- [ELZ-PK2-E1 \(Quadrant compact LED ring light\)](#)

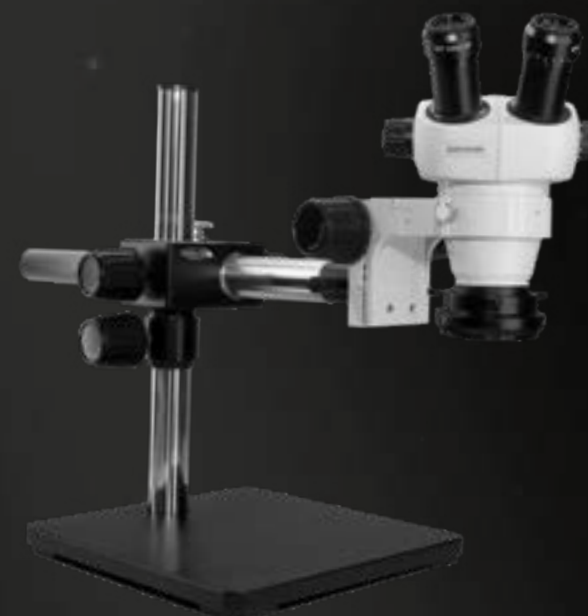
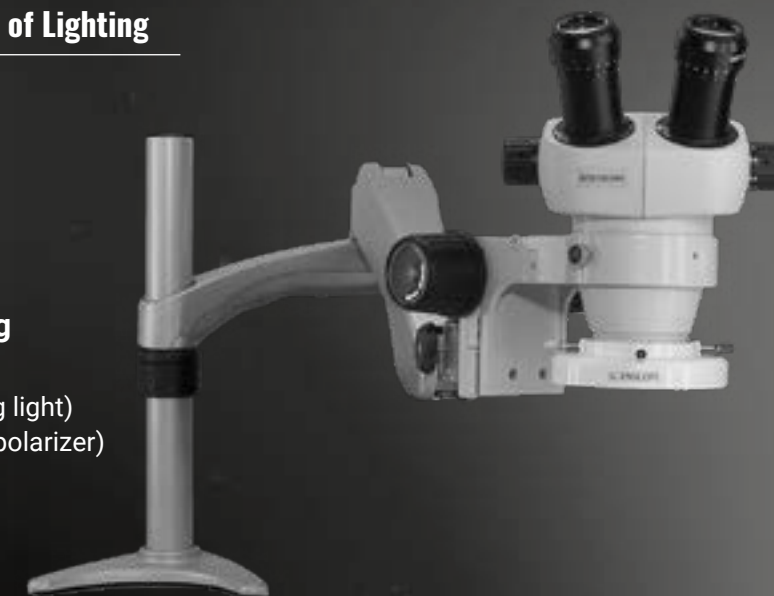
ELZ-PK3 System on Articulating-Arm w/choice of Lighting

Package Contents

- ELZ Stereo Zoom Binocular
- 10x eyepieces
- Articulating arm with 76mm focus rack
- 0.5x auxiliary lens

Available Packages with Choice of Lighting

- [ELZ-PK3-AN \(Fiber optic annular ring light guide\)](#)
- [ELZ-PK3-R3E \(New super-bright, low-profile LED ring light\)](#)
- [ELZ-PK3-R3 \(New high-intensity LED ring light with polarizer\)](#)
- [ELZ-PK3-E1 \(Quadrant compact LED ring light\)](#)



ELZ-PK5S System on Single-Arm Boom Stands w/choice of Lighting

Package Contents

- ELZ Stereo Zoom Binocular, 10x eyepieces
- Eye guards
- Single-arm boom stand with 76mm e-arm
- 0.5x auxiliary lens

Available Packages with Choice of Lighting

- [ELZ-PK5S-AN \(Fiber optic annular ring light guide\)](#)
- [ELZ-PK5S-R3E \(New super-bright, low-profile LED ring light\)](#)
- [ELZ-PK5S-R3 \(New high-intensity LED ring light with polarizer\)](#)
- [ELZ-PK5S-E1 \(Quadrant compact LED ring light\)](#)

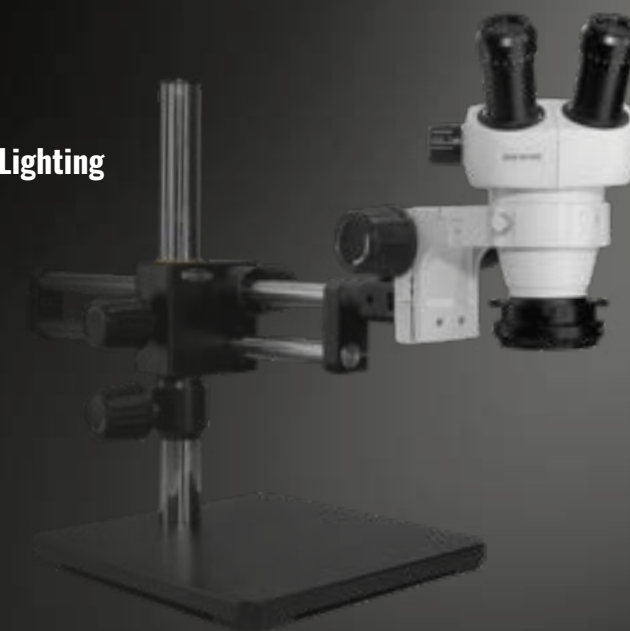
ELZ-PK5D System on Dual-Arm Boom Stands w/choice of Lighting

Package Contents

- ELZ Stereo Zoom Binocular
- 10x eyepieces
- Dual arm boom stand with 76mm e-arm
- 0.5x auxiliary lens

Available Packages with Choice of Lighting

- [ELZ-PK5D-AN \(Fiber optic annular ring light guide\)](#)
- [ELZ-PK5D-R3E \(New super-bright, low-profile LED ring light\)](#)
- [ELZ-PK5D-R3 \(New high-intensity LED ring light with polarizer\)](#)
- [ELZ-PK5D-E1 \(Quadrant compact LED ring light\)](#)



SSZ-II SERIES

Stereo Zoom Binocular/ Trinocular Microscopes

With long-term reliability and customer satisfaction in mind, we have redesigned the SSZ-II series Stereo Zoom Microscopes. We have retained the core quality and technology while improving the ergonomics, optics, and performance. We are confident you will experience the same long-term dependability and enjoy the new features and benefits.

HIGHLIGHTS

- Quality construction and optics
- Variety of accessories
- Cost-effective
- Great started microscope



Data Sheet / SSZ-II Body Specs

Microscope Body Zoom Range	0.67X - 4.5X
Magnification	6.7X-45X (w/10X eyepieces)
Zoom Ratio	1:6.7
Field of View	32.8mm - 4.9mm (w/ 10X eyepieces)
Work Distance	100MM
Dioptric Adjustment	±5
Interpupillary Adjustment	50-76mm
Eyepieces Inclination	45°
Microscope Ring Mount Diameter	76mm

COMPACT & COST EFFECTIVE

The SSZ series is the cornerstone of the ScienScope stereo zoom microscope line. The compact and durable design, incorporating the Greenough optical system, delivers exceptional flatness, depth of field, clarity, and accurate color. Over 15 years of continued customer satisfaction, the SSZ has remained ScienScope's most popular microscope.



HD Camera Options

View HD images in real-time on an HD LCD monitor and capture images to an SD card or connect to a computer via USB to capture images, annotate, and draw with the included software working environments.



User Friendly-Ergonomic

High eye-point eyepieces and ergonomically located zoom control make for one of the most comfortable user experiences of any non-parallel zoom system.



Upgradable System

Precision CNC machine parts assembled to the leading industry standards extend the microscope's life and lower service and maintenance costs.

PROVEN PERFORMANCE

SSZ-II Binocular Optical Specs

Objective Lens	Eyepieces				Working Distance
	10x		20x		
	MAG	FOV (mm)	MAG	FOV (mm)	
0.3x	2x- 13.5x	109.5- 16.3mm	4x- 27x	59.7- 8.9mm	287mm
0.4x	2.7x- 18x	82.1- 12.2mm	5.4x- 36x	44.8- 6.7mm	217mm
0.5x	3.4x- 22.5x	65.7- 9.8mm	6.7x- 45x	35.8- 5.3mm	177mm
0.75x	5x- 33.8x	43.8- 6.5mm	10.1x- 67.5x	23.9- 3.6mm	117mm
1x (Default)	6.7x- 45x	32.8- 4.9mm	13.4x- 90x	17.9- 2.7mm	100mm
1.5x	10.1x- 67.5x	21.9- 3.3mm	20.1x- 135x	11.9- 1.8mm	47mm
2x	13.4x- 90x	16.4- 2.4mm	26.8x- 180x	9- 1.3mm	26mm

Optical Magnification Formula

Total Magnification = (Mag. of Eyepieces) X (Mag. of the objective zoom range on body) X (Mag/ of objective lens)

SSZ-II BINOCULAR SYSTEMS

SZ-PK1 Systems on post stands w/choice of lighting

Package Contents

- SSZ-II Stereo Zoom Binocular
- 10x eyepieces
- ErgoPost Stand with 76mm focus rack

Available Packages with Choice of Lighting

- SZ-PK1-AN (Fiber optic annular ring light guide)
- [SZ-PK1-R3E \(New super-bright, low-profile LED ring light\)](#)
- SZ-PK1-R3 (New high-intensity LED ring light with polarizer)
- SZ-PK1-E1 (Quadrant compact LED ring light)



SZ-PK2 Systems on track stands w/choice of lighting

Package Contents

- SSZ-II Stereo Zoom Binocular
- 10x eyepieces
- ErgoTrack Stand with 76mm focus rack

Available Packages with Choice of Lighting

- SZ-PK2-AN (Fiber optic annular ring light guide)
- SZ-PK2-R3E (New super-bright, low-profile LED ring light)
- [SZ-PK2-R3 \(New high-intensity LED ring light with polarizer\)](#)
- SZ-PK2-E1 (Quadrant compact LED ring light)



SZ-PK3 Systems on articulating arms w/choice of lighting

Package Contents

- SSZ-II Stereo Zoom Binocular
- 10x eyepieces
- Articulating arm with 76mm focus rack
- 0.5x auxiliary lens

Available Packages with Choice of Lighting

- SZ-PK3-AN (Fiber optic annular ring light guide)
- SZ-PK3-R3E (New super-bright low-profile LED ring light)
- SZ-PK3-R3 (New high-intensity LED ring light with polarizer)
- [SZ-PK3-E1 \(Quadrant compact LED ring light\)](#)

SZ-PK5S Systems on single-arm boom stands w/choice of lighting

Package Contents

- SSZ-II Stereo Zoom Binocular, 10x eyepieces
- Eye guards
- Single-arm boom stand with 76mm e-arm
- 0.5x auxiliary lens

Available Packages with Choice of Lighting

- SZ-PK5S-AN (Fiber optic annular ring light guide)
- [SZ-PK5S-R3E \(New super-bright, low-profile LED ring light\)](#)
- SZ-PK5S-R3 (New high-intensity LED ring light with polarizer)
- SZ-PK5S-E1 (Quadrant compact LED ring light)



SZ-PK5D Systems on dual-arm boom stands w/choice of lighting

Package Contents

- SSZ-II Stereo Zoom Binocular
- 10x eyepieces
- Dual arm boom stand with 76mm e-arm
- 0.5x auxiliary lens

Available Packages with Choice of Lighting

- SZ-PK5D-AN (Fiber optic annular ring light guide)
- [SZ-PK5D-R3E \(New super-bright, low-profile LED ring light\)](#)
- SZ-PK5D-R3 (New high-intensity LED ring light with polarizer)
- SZ-PK5D-E1 (Quadrant compact LED ring light)

SZ-PK3FX Systems on heavy-duty articulating arms w/choice of lighting

Package Contents

- SSZ-II Stereo Zoom Binocular
- 10x eyepieces
- HEAVY DUTY articulating arm (15" vertical post & 76mm focus mount)
- 0.5x auxiliary lens

Available Packages with Choice of Lighting

- SZ-PK3FX-AN (Fiber optic annular ring light guide)
- [SZ-PK3FX-R3E \(New super-bright, low-profile LED ring light\)](#)
- SZ-PK3FX-R3 (New high-intensity LED ring light with polarizer)
- SZ-PK3FX-E1 (Quadrant compact LED ring light)



NZ SERIES

Stereo Zoom Binocular/ Trinocular Microscopes

Sciencescope designed NZ Series Stereo Zoom Microscopes to meet users' requirements who demand superior features and higher performance optics from a stereo zoom microscope.



HIGHLIGHTS

- Quality construction and optics
- Long working distance
- Maintenance-free
- True trinocular



Data Sheet / NZ Body Specs

Microscope Body Zoom Range	08X- 5X
Magnification	8X- 50X (w/10X eyepieces)
Zoom Ratio	1:6.3
Field of View	27.5mm- 4.4mm (w/10X eyepieces)
Work Distance	115mm
Dioptric Adjustment	±5
Interpupillary Adjustment	50-76mm
Eyepieces Inclination	45°
Microscope Ring Mount Diameter	76mm

HIGHER PERFORMANCE

The NZ Series is well-suited for all industrial applications, featuring a zoom magnification of 5X and a long working distance of 115mm. The airtight design allows for any environment where temperature and humidity are high. The NZ series trinocular is a true trinocular using the highest quality beam splitter for an exceptionally flat image.



Maintenance Free

Anti-mold and air-tight sealed body design eliminates the need for regular maintenance and adds additional reliability to most working environments.



Precision Optics

Precision polished optics provide a clear and defined image for accurate inspection, manual assembly, micro-soldering, or dissection.



HD Camera Options

The third viewport provides video output and allows for training and documenting your work to be a snap. Now, with 4K or 1080p options!

SUPERIOR OPTICS AND MECHANICAL CONSTRUCTION

SSZ-II Binocular Optical Specs

Objective Lens	Eyepieces						Working Distance
	10x		15x		20x		
	MAG	FOV (mm)	MAG	FOV (mm)	MAG	FOV (mm)	
0.5x	4x- 25x	55- 8.8mm	6x- 37.5x	40- 6.4mm	8x- 50x	31.2- 5.0mm	211mm
1x (Default)	8x- 50x	27.5- 4.4mm	12x- 75x	20- 3.2mm	16x- 100x	15.6- 2.5mm	115mm
2x	16x- 100x	13.8- 2.2mm	24x- 150x	10- 1.6mm	32x- 200x	7.8- 1.3mm	43.5mm

Optical Magnification Formula

Total Magnification = (Mag. of Eyepieces) X (Mag. of the objective zoom range on body) X (Mag/ of objective lens)

NZ BINOCULAR SYSTEMS

NZ-PK1 Systems on post stands w/choice of lighting

Package Contents

- NZ Stereo Zoom Binocular
- 10x eyepieces
- ErgoPost Stand with 76mm focus rack

Available Packages with Choice of Lighting

- NZ-PK1-AN (Fiber optic annular ring light guide)
- NZ-PK1-R3E (New super-bright, low-profile LED ring light)
- NZ-PK1-R3 (New high-intensity LED ring light with polarizer)
- NZ-PK1-E1 (Quadrant compact LED ring light)



NZ-PK2 Systems on track stands w/choice of lighting

Package Contents

- NZ Stereo Zoom Binocular
- 10x eyepieces
- ErgoTrack Stand with 76mm focus rack

Available Packages with Choice of Lighting

- NZ-PK2-AN (Fiber optic annular ring light guide)
- NZ-PK2-R3E (New super-bright, low-profile LED ring light)
- NZ-PK2-R3 (New high-intensity LED ring light with polarizer)
- NZ-PK2-E1 (Quadrant compact LED ring light)



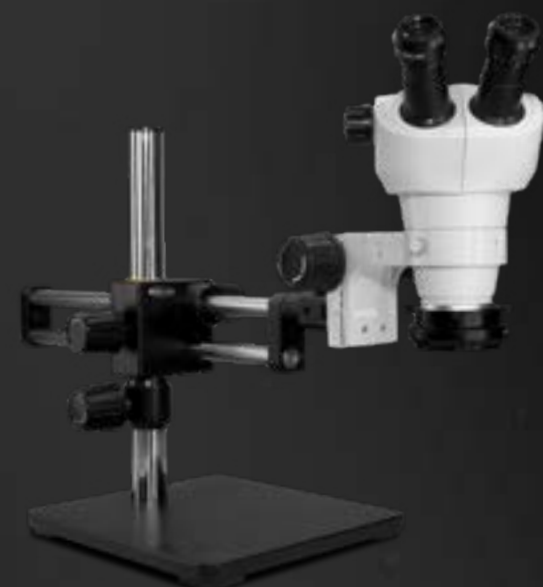
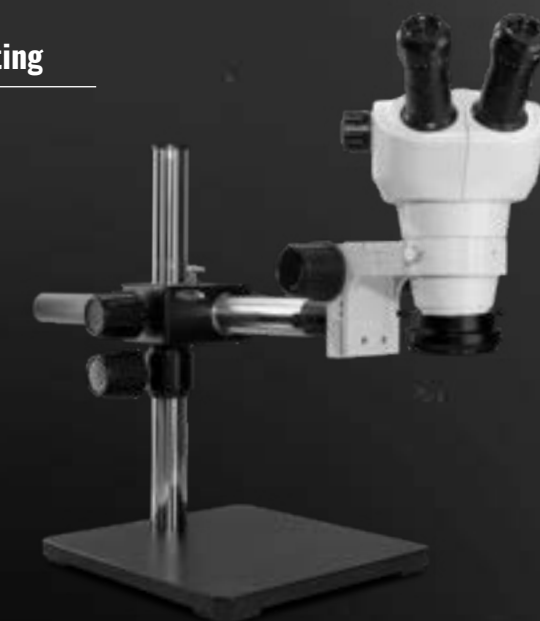
NZ-PK5S Systems on single-arm boom stands w/choice of lighting

Package Contents

- NZ Stereo Zoom Binocular, 10x eyepieces
- Eye guards
- Single-arm boom stand with 76mm e-arm
- 0.5x auxiliary lens

Available Packages with Choice of Lighting

- NZ-PK5S-AN (Fiber optic annular ring light guide)
- NZ-PK5S-R3E (New super-bright, low-profile LED ring light)
- NZ-PK5S-R3 (New high-intensity LED ring light with polarizer)
- NZ-PK5S-E1 (Quadrant compact LED ring light)



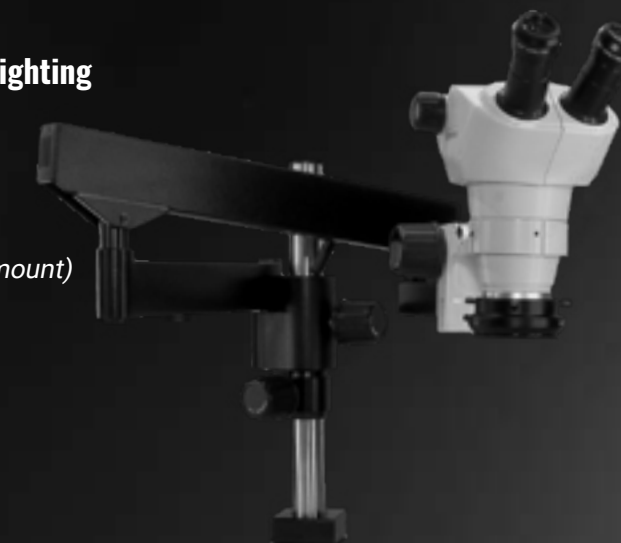
NZ-PK5D Systems on dual arm boom stands w/choice of lighting

Package Contents

- NZ Stereo Zoom Binocular
- 10x eyepieces
- Dual arm boom stand with 76mm e-arm
- 0.5x auxiliary lens

Available Packages with Choice of Lighting

- NZ-PK5D-AN (Fiber optic annular ring light guide)
- NZ-PK5D-R3E (New super-bright, low-profile LED ring light)
- NZ-PK5D-R3 (New high-intensity LED ring light with polarizer)
- NZ-PK5D-E1 (Quadrant compact LED ring light)



NZ-PK3 Systems on articulating arms w/choice of lighting

Package Contents

- NZ Stereo Zoom Binocular
- 10x eyepieces
- Articulating arm with 76mm focus rack
- 0.5x auxiliary lens

Available Packages with Choice of Lighting

- NZ-PK3-AN (Fiber optic annular ring light guide)
- NZ-PK3-R3E (New super-bright, low-profile LED ring light)
- NZ-PK3-R3 (New high-intensity LED ring light with polarizer)
- NZ-PK3-E1 (Quadrant compact LED ring light)

NZ-PK5 Systems on heavy-duty articulating arms w/choice of lighting

Package Contents

- NZ Stereo Zoom Binocular
- 10x eyepieces
- HEAVY DUTY articulating arm (5" vertical post and 76mm focus mount)
- 0.5x auxiliary lens

Available Packages with Choice of Lighting

- NZ-PK3FX-AN (Fiber optic annular ring light guide)
- NZ-PK3FX-R3E (New super-bright, low-profile LED ring light)
- NZ-PK3FX-R3 (New high-intensity LED ring light with polarizer)
- NZ-PK3FX-E1 (Quadrant compact LED ring light)

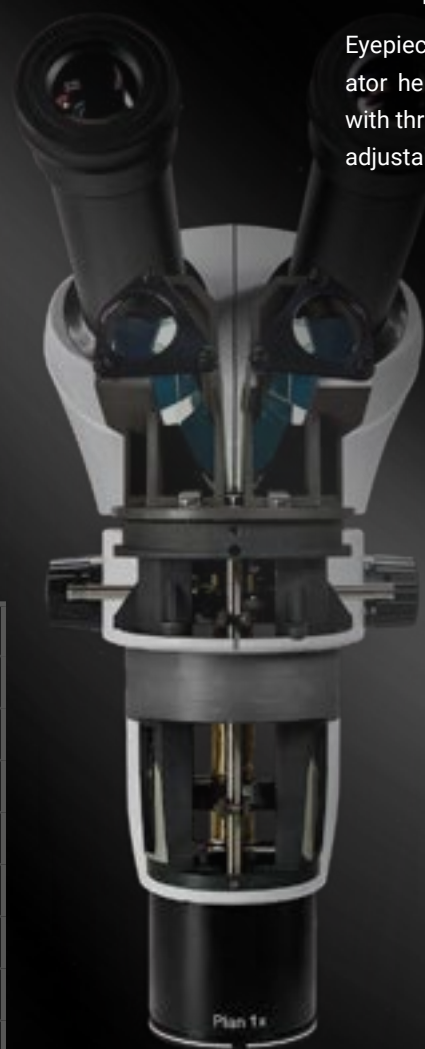
E SERIES (CMO)

Parallel Zoom Stereo Microscope

The E-Series offers higher magnification than standard models, enabling high-resolution observation of small features. Improved aberration correction provides bright and sharp images throughout the entire field. The parallel optics allow ergonomic accessories and observation attachments for various applications.

HIGHLIGHTS

- Ergonomic and customizable
- Infinity corrected optics
- Maintenance-free
- True trinocular



Data Sheet / E-Series (CMO) Specs

Microscope Body Zoom Range	08X- 8X
Magnification	8X- 80X (w/ 10X eyepieces)
Zoom Ratio	1:10
Field of View	28.8mm- 2.9mm (w/10X eyepieces)
Work Distance	78mm
Dioptric Adjustment	±5
Interpupillary Adjustment	51- 75mm
Eyepieces Inclination	20°
Microscope Ring Mount Diameter	76mm

HIGHER PERFORMANCE

The NZ Series is well-suited for all industrial applications, featuring a zoom magnification of 5X and a long working distance of 115mm. The airtight design allows for any environment where temperature and humidity are high. The NZ series trinocular is a true trinocular using the highest quality beam splitter for an exceptionally flat image.



Optimum User Comfort

Eyepieces tilt and rotate to adjust for operator height. Eyepieces rotate 180 degrees with three inches of travel. The inclination is adjustable from 0 to 45 degrees.



Stackable Accessories

A parallel infinity-corrected optical system allows for ergonomic customization and stacking of several components without distorting the image.



Less Operator Fatigue

An eyepiece inclination of 20° allows you to observe without leaning forward, which reduces fatigue during long hours of operation.

EXCEPTIONAL CLARITY AND COMFORT



E-Series (CMO) Binocular Optical Specs

Objective Lens	Eyepieces					Working Distance
	Body Zoom	10x	20x			
		MAG	FOV (mm)	MAG	FOV (mm)	
0.5x	1:6	4x-25x	57.5-9.2mm	8x-50x	35-5.6mm	187mm
	1:10	4x-40x	57.5-5.8mm	8x-80x	35.-3.5mm	
1x (Default)	1:6	8x-50x	28.8-4.6mm	16x-100x	17.5-2.8mm	78mm
	1:10	8x-80x	28.8-2.9mm	16x-160x	17.5-1.8mm	
2x	1:6	16x-100x	14.4-2.9mm	32x-200x	8.8-1.4mm	35mm
	1:10	16x-160x	14.4-1.8mm	32x-320x	8.8-0.9mm	

Optical Magnification Formula

Total Magnification = (Mag. of Eyepieces) X (Mag. of the objective zoom range on body) X (Mag/ of objective lens)

E-Series Binocular Configuration

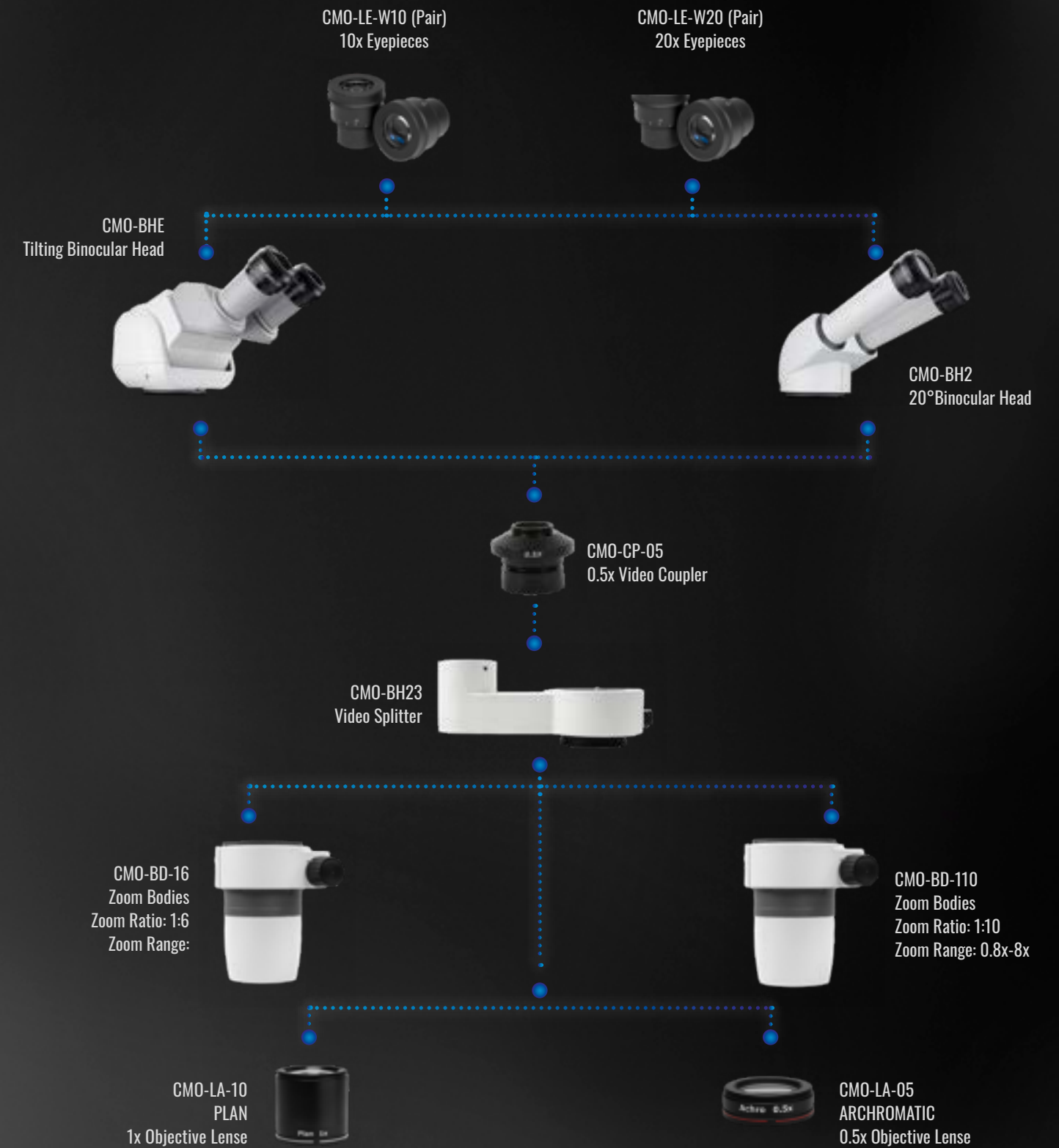
Minimum required components that comprise a binocular microscope system:

- Eyepieces
- Binocular Head
- Zoom Body
- Objective Lens

E-Series Microscopes configured as a binocular system with 0°-45° Tilting Head.



E-SERIES MICROSCOPE CONFIGURATION CHART

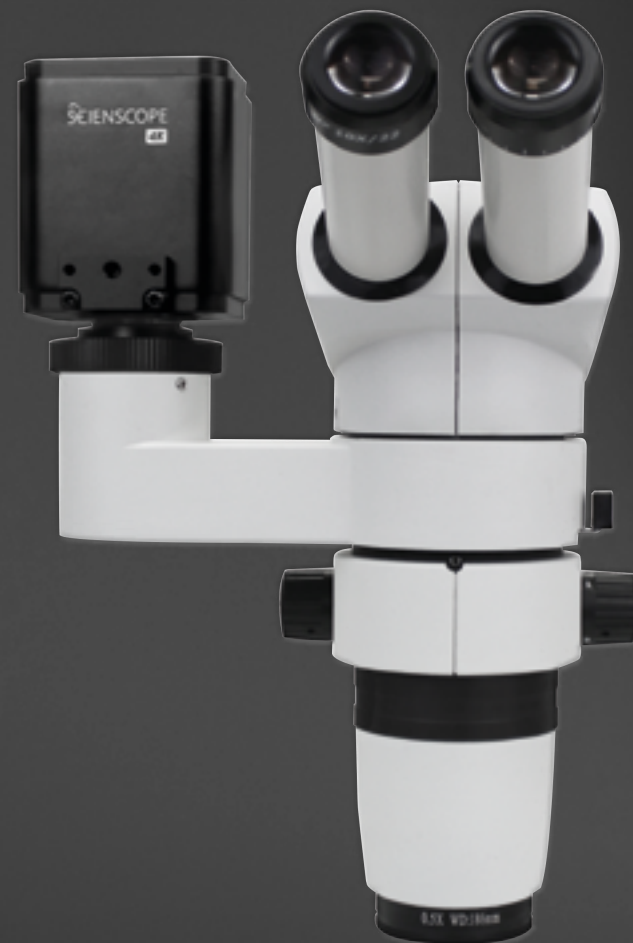


E-Series Trinocular Configuration

Minimum required components that comprise a trinocular microscope system:

- Eyepieces
- Binocular Head
- Video Splitter
- Video Coupler
- Zoom Body
- Objective Lens
- Digital Camera

E-Series Microscopes are configured as a trinocular system with an optional video splitter, video coupler, and CMOS Camera.



E-SERIES 20° BINOCULAR SYSTEMS



Package Contents

- E-Series 20° Binocular Head
- 10x Eyepieces (Pair)
- 1:6 Zoom Body (0.8x-5x)
- 1x Objective Lens

Package Contents

- E-Series 20° Binocular Head
- 10x Eyepieces (Pair)
- 1:6 Zoom Body (0.8x-5x)
- 1x Objective Lens
- Dual focus ergo-track stand with stage

Package Contents

- E-Series 20° Binocular Head
- 10x Eyepieces (Pair)
- 1:6 Zoom Body (0.8x-5x)
- 0.5x Achromatic objective Lens

Packages w/choice of Lighting

[CMO-PK2 \(Dual LED Illuminated Track Stand with reflected and transmitted light\)](#)

Packages w/choice of Lighting

[CMO-PK2-AN \(Fiber optic annular ring light guide\)](#)
[CMO-PK2-R3E \(New super-bright, low-profile LED\)](#)

Packages w/choice of Lighting

[CMO-PK3-E1 \(Quadrant compact LED ring light\)](#)
[CMO-PK3-R3E \(NEW high-intensity LED ring light\)](#)



Package Contents

- E-Series 20° Binocular Head
- 10x Eyepieces (Pair)
- 1:6 Zoom Body (0.8x-5x)
- 0.5x Achromatic objective Lens
- LED illuminator
- 76mm focus mount

Package Contents

- E-Series 20° Binocular Head
- 10x Eyepieces (Pair)
- 1:6 Zoom Body (0.8x-5x)
- 0.5x Achromatic objective Lens
- LED illuminator
- 76mm focus mount

Packages w/choice of Lighting

[CMO-PK5S-AN \(Fiber optic annular ring light guide\)](#)
[CMO-PK5S-R3E \(New super-bright, low-profile LED ring light\)](#)
[CMO-PK5S-E1 \(Quadrant compact LED ring light\)](#)

Packages w/choice of Lighting

[CMO-PK5D-AN \(Fiber optic annular ring light guide\)](#)
[CMO-PK5D-R3E \(New super-bright, low-profile LED ring light\)](#)
[CMO-PK5D-E1 \(Quadrant compact LED ring light\)](#)

E-SERIES 0°-45° BINOCULAR SYSTEMS



Package Contents

- E-Series 0°-45° Tilting Head
- 10x Eyepieces (Pair)
- 1:6 Zoom Body (0.8x-5x)
- 1x Objective Lens

Package Contents

- E-Series 0°-45° Tilting Head
- 10x Eyepieces (Pair)
- 1:6 Zoom Body (0.8x-5x)
- 1x Objective Lens
- Dual focus ergo-track stand with stage

Package Contents

- E-Series 0°-45° Tilting Head
- 10x Eyepieces (Pair)
- 1:6 Zoom Body (0.8x-5x)
- 0.5x Achromatic objective Lens

Packages w/choice of Lighting

[CMO-PK2E \(Dual LED Illuminated Track Stand with reflected and transmitted light\)](#)

Packages w/choice of Lighting

[CMO-PK2E-AN \(Fiber optic annular ring light guide\)](#)
[CMO-PK2E-R3E \(New super-bright, low-profile LED ring light\)](#)

Packages w/choice of Lighting

[CMO-PK3-E1-E \(Quadrant compact LED ring light\)](#)
[CMO-PK3-R3E-E \(NEW high-intensity LED ring light\)](#)



Package Contents

- E-Series 0°-45° Tilting Head
- 10x Eyepieces (Pair)
- 1:6 Zoom Body (0.8x-5x)
- 0.5x Achromatic objective Lens
- LED illuminator
- 76mm focus mount

Package Contents

- E-Series 0°-45° Tilting Head
- 10x Eyepieces (Pair)
- 1:6 Zoom Body (0.8x-5x)
- 0.5x Achromatic objective Lens
- LED illuminator
- 76mm focus mount

Packages w/choice of Lighting

[CMO-PK5S-AN-E \(Fiber optic annular ring light guide\)](#)
[CMO-PK5S-R3E-E \(New super-bright, low-profile LED ring light\)](#)
[CMO-PK5S-E1-E \(Quadrant compact LED ring light\)](#)

Packages w/choice of Lighting

[CMO-PK5D-R3E-E \(New super-bright, low-profile LED ring light\)](#)
[CMO-PK5D-E1-E \(Quadrant compact LED ring light\)](#)

VERSA CAM (CC-HDMI-CD2)

1080p HDMI and 2 MP USB 2.0 Camera

Excellent HDMI camera with Direct/USB output and 1080p Resolution. Very Fast refresh rate on Live Video at 60 Frames Per Second Sensor. Digital Zoom for increasing magnification.

Image and Movie Capture are built into the camera on an SD Card (No Computer Required). Compatible with all Scienscope Lenses and Microscope including Macro Lens (CC-97-LN1) and Micro Zoom (MZ7A-Zoom). Two USB Ports allow connection to a computer or network. Video Image Express Measurement Software is a great addition.



FEATURES USING HDMI CONNECTION

- On-screen control bar and setting menu
- Image and video capture to SD card
- Split-screen live image/captured image comparison (picture in picture)
- Image and video gallery / Image and video review
- Wireless mouse control



FEATURES USING USB 2.0 CONNECTION

- Image and video capture using Windows 10 camera app
- Image and video capture using the included software
- Annotation and drawing tools on live captured images
- Upgrade software with FOV measurement tools



SPECS

- 1080p HD (1920x1080 @ 60 fps) HDMI
- 2 Megapixel (1920x1080 @ 30 fps) USB 2.0

	1080p Resolution	4K Resolution	HDMI Live Image	USB 2.0 or 3.0 Connect and capture	SD Card Capture	USB Thumb Drive Capture	WiFi Transmitter and Connect	Autofocus	Integrated FOV Measurement
VersaCam (CC-HDMI-CD2)	●		●	●	●				
SmartCam- Ultra (CC-SMART-4K-AF)	●	●	●	●	●	●	●	●	●

SMART CAM-ULTRA AF (CC-SMART-4K-AF)

4K HDMI, 8.2 MP USB 3.0, and WiFi Camera w/ AutoFocus

Excellent HDMI camera with Direct/USB output and 1080p Resolution. Very Fast refresh rate on Live Video at 60 Frames Per Second Sensor. Digital Zoom for increasing magnification.

Image and Movie Capture are built into the camera on an SD Card (No Computer Required). Compatible with all Scienscope Lenses and Microscope including Macro Lens (CC-97-LN1) and Micro Zoom (MZ7A-Zoom). Two USB Ports allow connection to a computer or network. Video Image Express Measurement Software is a great addition.



CAMERA FEATURES USING HDMI CONNECTION

- On-screen control bar and setting menu
- Image and video capture to SD card
- Split-screen live image/captured image comparison (picture in picture)
- Image and video gallery / Image and video review
- Wireless mouse control



CAMERA FEATURES USING USB 2.0 CONNECTION

- Image and video capture using Windows 10 camera app
- Image and video capture using the included software
- Annotation and drawing tools on live captured images
- Upgrade software with FOV measurement tools



SPECS

- 1080p HD (1920x1080 @ 60 fps) HDMI
- 2 Megapixel (1920x1080 @ 30 fps) USB 2.0

Measurement Data Export	Live Annotation	Live image/Captured Image Compare	DXF Overlay	Onscreen reticle	Digital Caliper / Counting grid	Live Image Processing Menu	Digital Zoom	Settings Export and Import
		●			●	●	●	
●	●	●	●	●	●	●	●	●

SSZ TRINOCULAR SYSTEMS

Package Contents

- SZ Stereo Zoom TRUE Trinocular
- 10x eyepieces with eye guards
- Dual arm boom stand with 76mm e-arm
- 0.5x auxiliary lens
- 0.5x video coupler
- 1080p HDMI/USB camera (Includes SD card, USB cable, and mouse) with 23" HD LCD monitor and capture software

Available Packages with Choice of Lighting

- SZ-PK10-AN (LED fiber optic illuminator, Fiber optic annular ring light guide)
- SZ-PK10-R3E (8-point LED right light)
- SZ-Pk10-R3 (NEW high-intensity LED right light with polarizer)
- SZ-PK10-E1 (Quadrant compact LED right light)



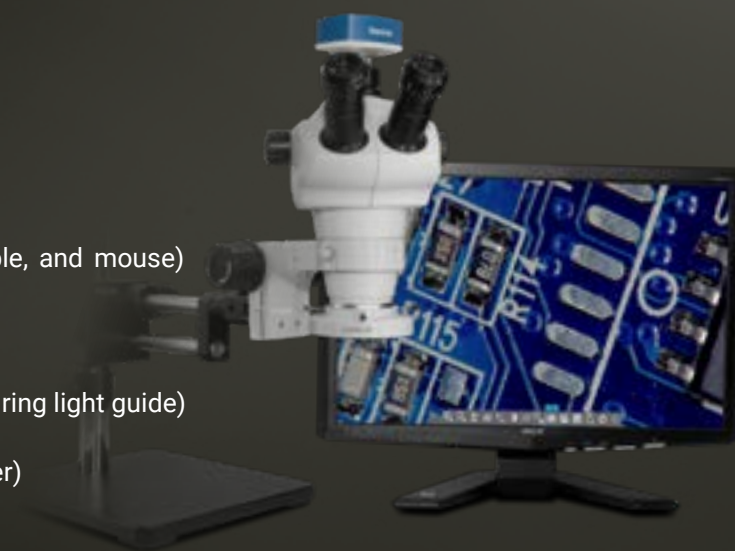
NZ TRINOCULAR SYSTEMS

Package Contents

- NZ Stereo Zoom TRUE Trinocular
- 10x eyepieces with eye guards
- Dual arm boom stand with 76mm e-arm
- 0.5x auxiliary lens
- 0.4x video coupler
- 1080p HDMI/USB camera (Includes SD card, USB cable, and mouse) with 23" HD LCD monitor and capture software

Available Packages with Choice of Lighting

- NZ-PK10-AN (LED fiber optic illuminator, Fiber optic annular ring light guide)
- NZ-PK10-R3E (New super-bright, low-profile LED ring light)
- NZ-Pk10-R3 (NEW high-intensity LED right light with polarizer)
- NZ-PK10-E1 (Quadrant compact LED right light)

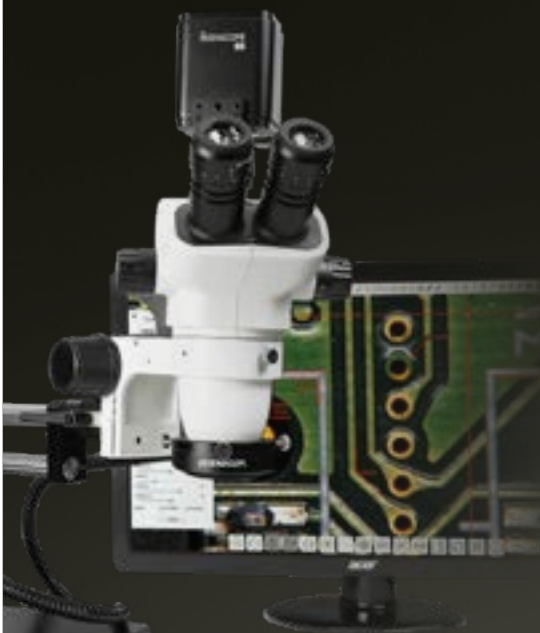


Package Contents

- SZ Stereo Zoom TRUE Trinocular
- 10x eyepieces with eye guards
- Dual arm boom stand with 76mm e-arm
- 0.5x auxiliary lens
- 0.5x video coupler
- NEW 4K HDMI/USB/WiFi AutoFocu camera (Includes SD card, USB cable, and mouse) with 26" 4K monitor and capture software

Available Packages with Choice of Lighting

- SZ-PK12-AN (LED fiber optic illuminator, Fiber optic annular ring light guide)
- SZ-PK12-R3E (8-point LED right light)
- SZ-Pk12-R3 (NEW high-intensity LED right light with polarizer)
- SZ-PK12-E1 (Quadrant compact LED right light)



Package Contents

- NZ Stereo Zoom TRUE Trinocular
- 10x eyepieces with eye guards
- Dual arm boom stand with 76mm e-arm
- 0.5x auxiliary lens
- 0.4x video coupler
- NEW 4K HDMI/USB/WiFi AutoFocu camera (Includes SD card, USB cable, and mouse) with 26" 4K monitor and capture software

Available Packages with Choice of Lighting

- NZ-PK12-AN (LED fiber optic illuminator, Fiber optic annular ring light guide)
- NZ-PK12-R3E (New super-brigh, low-profile LED ring light)
- NZ-Pk12-R3 (NEW high-intensity LED right light with polarizer)
- NZ-PK12-E1 (Quadrant compact LED right light)



SSZ Trinocular Video Specs

Objective Lens	Video Coupler		Working Distance
	0.5x		
	MAG	FOV (mm)	
0.3x	7x-47.1x	100-13mm	287mm
0.4x	9.4x-62.9x	75-10mm	217mm
0.5x	11.7x-78.6x	60-8mm	177mm
0.75x	17.5x-117.9x	40-5.3mm	117mm
1x (Default)	23.4x-157.2x	30-4mm	100mm
1.5x	35.1x-235.7x	20-2.6mm	47mm
2x	46.8x-314.3x	15-2mm	26mm

VIDEO MAGNIFICATION FORMULA

Total Magnification = (Mag. of CCD) X (Mag. of the objective zoom range on body) X (Mag. of objective lens) X (Diagonal display)

NZ Trinocular Video Specs

Objective Lens	Video Coupler		Working Distance
	0.4x		
	MAG	FOV (mm)	
0.5x	11.2x - 69.9x	49.97-7.99mm	211mm
1x (Default)	22.4x-139.7x	24.98-3.99mm	115mm
2x	44.7x-279.4x	12-2mm	43.5mm

VIDEO MAGNIFICATION FORMULA

Total Magnification = (Mag. of CCD) X (Mag. of the objective zoom range on body) X (Mag. of objective lens) X (Diagonal display)

E-SERIES 20° TRINOCULAR SYSTEMS

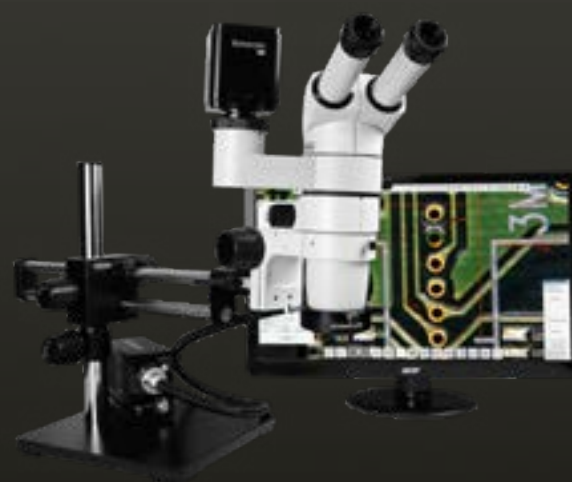


Package Contents

- E-Series 20° Binocular Head with 10x Eyepieces (Pair)
- 1:6 Zoom Body (0.8x-5x)
- 0.5x Achromatic objective Lens
- 76mm focus mount
- Dual arm boom stand
- 0.4x video coupler and beam splitter
- 1080p HDMI/USB camera (Includes SD card, USB cable, and mouse) with 23" HD LCD monitor and capture software

Available Packages w/choice of Lighting

- CMO-PK10-AN (Dual LED Illuminator with Fiber optic annular ring light)
- CMO-PK10-R3E (NEW high-intensity LED ring light)
- CMO-PK10-E1 (Quadrant compact LED ring light)



Package Contents

- E-Series 20° Binocular Head with 10x Eyepieces (Pair)
- 1:6 Zoom Body (0.8x-5x)
- 0.5x Achromatic objective Lens
- 76mm focus mount
- Dual arm boom stand
- 0.4x video coupler and beam splitter
- NEW 4K HDMI/USB/WiFi AF camera (Includes SD card, USB cable, and mouse) with 26" 4K monitor and capture software

Available Packages w/choice of Lighting

- CMO-PK12-AN (Dual LED Illuminator with Fiber optic annular ring light)
- CMO-PK12-R3E (NEW high-intensity LED ring light)
- CMO-PK12-E1 (Quadrant compact LED ring light)

E-SERIES 0° - 45° TRINOCULAR SYSTEMS



Package Contents

- E-Series 40° Binocular Head with 10x Eyepieces (Pair)
- 1:6 Zoom Body (0.8x-5x)
- 0.5x Achromatic objective Lens
- 76mm focus mount
- Dual arm boom stand
- 0.4x video coupler and beam splitter
- 1080p HDMI/USB camera (Includes SD card, USB cable, and mouse) with 23" HD LCD monitor and capture software

Available Packages w/choice of Lighting

- CMO-PK10-AN (Dual LED Illuminator with Fiber optic annular ring light)
- CMO-PK10-R3E (NEW high-intensity LED ring light)
- CMO-PK10-E1 (Quadrant compact LED ring light)

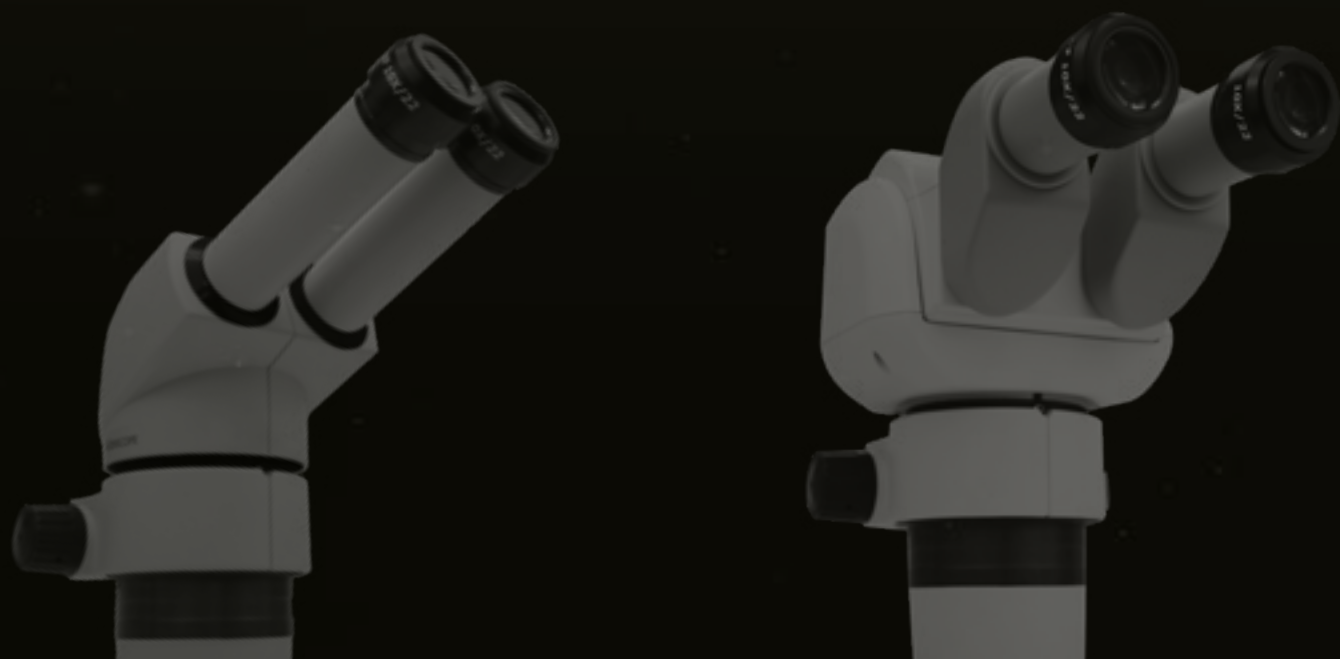


Package Contents

- E-Series 40° Binocular Head with 10x Eyepieces (Pair)
- 1:6 Zoom Body (0.8x-5x)
- 0.5x Achromatic objective Lens
- 76mm focus mount
- Dual arm boom stand
- 0.4x video coupler and beam splitter
- NEW 4K HDMI/USB/WiFi AF camera (Includes SD card, USB cable, and mouse) with 26" 4K monitor and capture software.

Available Packages w/choice of Lighting

- CMO-PK12-AN-E (Dual LED Illuminator with Fiber optic annular ring light)
- CMO-PK12-R3E-E (NEW high-intensity LED ring light)
- CMO-PK12-E1-E (Quadrant compact LED ring light)



E-Series Trinocular Video Specs

Objective Lens	Zoom Body	Video Coupler		working distance
		0.5x		
		MAG	FOV (mm)	
0.5x	1:6	14x-87.3x	35- 5.6mm	187mm
	1:10	14x-139.7x	35- 3.5mm	
1x	1:6	27.9x-174.6x	17.5- 2.8mm	78mm
	1:10	27.9x-279.4x	17.5- 1.8mm	

VIDEO MAGNIFICATION FORMULA

Total Magnification = (Mag. of CCD) X (Mag. of the objective zoom range on body) X (Mag. of objective lens) X (Diagonal display)



GET IN TOUCH

5751 Schaefer Ave.

Chino, CA 91710

+ 1 (909) 590-7273

info@scienscope.com