

SCIENSCOPE

## Stereo Zoom Microscopes

**ELZ** Series 7X-30X

**SSZ-II** Series 6.7X-45X

**NZ** Series 8X-50X

# ELZ Series 7X-30X

## Overview

The ELZ microscope series was designed for entry level users or companies that require good quality on a budget. High performance optics and a small package deliver a great scope at a very affordable price.

## Features

- Quality construction and optics
- Variety of accessories
- Cost effective
- Great starter microscope



## Data Sheet / ELZ Body Specifications

Microscope body zoom range	<b>0.7X-3X</b>
Magnification	<b>7X-30X (w/ 10X eyepieces)</b>
Zoom Ratio	<b>1:4.3</b>
Field of View	<b>31.4mm - 7.3mm (w/ 10X eyepieces)</b>
Working Distance	<b>100mm</b>
Dioptric Adjustment	<b>±5</b>
Interpupillary Adjustment	<b>46-76mm</b>
Eyepieces Inclination	<b>60°</b>
Microscope Ring Mount Diameter	<b>76mm</b>

# Compact and Cost Effective

High quality images with greater flatness are accomplished by using the optical design and quality of all ScienScope's stereo zoom microscope series. The coatings on lens surfaces provide clean, bright and high contrast views of your toughest applications.



## Upgradable System

Available upgrades on eyepieces, objectives, lenses, light sources and many other microscope components allows flexible adaptation to your changing workflow.



## Maintenance-Free

Anti-mold and air-tight sealed body design eliminates the need for regular maintenance and adds additional reliability in most working environments.



## High Quality Optics

Based on NZ series microscope construction, the ELZ outperforms many competitors in the compact category.

## ELZ Binocular Optical Specifications

Objective Lens	Eyepieces						Working Distance
	10x		15x		20x		
	MAG	FOV (mm)	MAG	FOV (mm)	MAG	FOV (mm)	
0.5X	3.5x-15x	66.9-15	5.3x-22.5x	4.6-11	7x-30x	36-8.3	177mm
DEFAULT	7x-30x	31.4-7.3	10.5x-45x	22.9-5.3	14x-60x	17.9-4.1	100mm
2x	14x-60x	16-3.7	21x-90x	11.4-8	28x-120x	9-6	26mm

**Included in standard packages**

## Optical Magnification Formula

Total Magnification = (Mag. of Eyepieces) X (Mag. of objective zoom range on body) X (Mag. of objective lens)

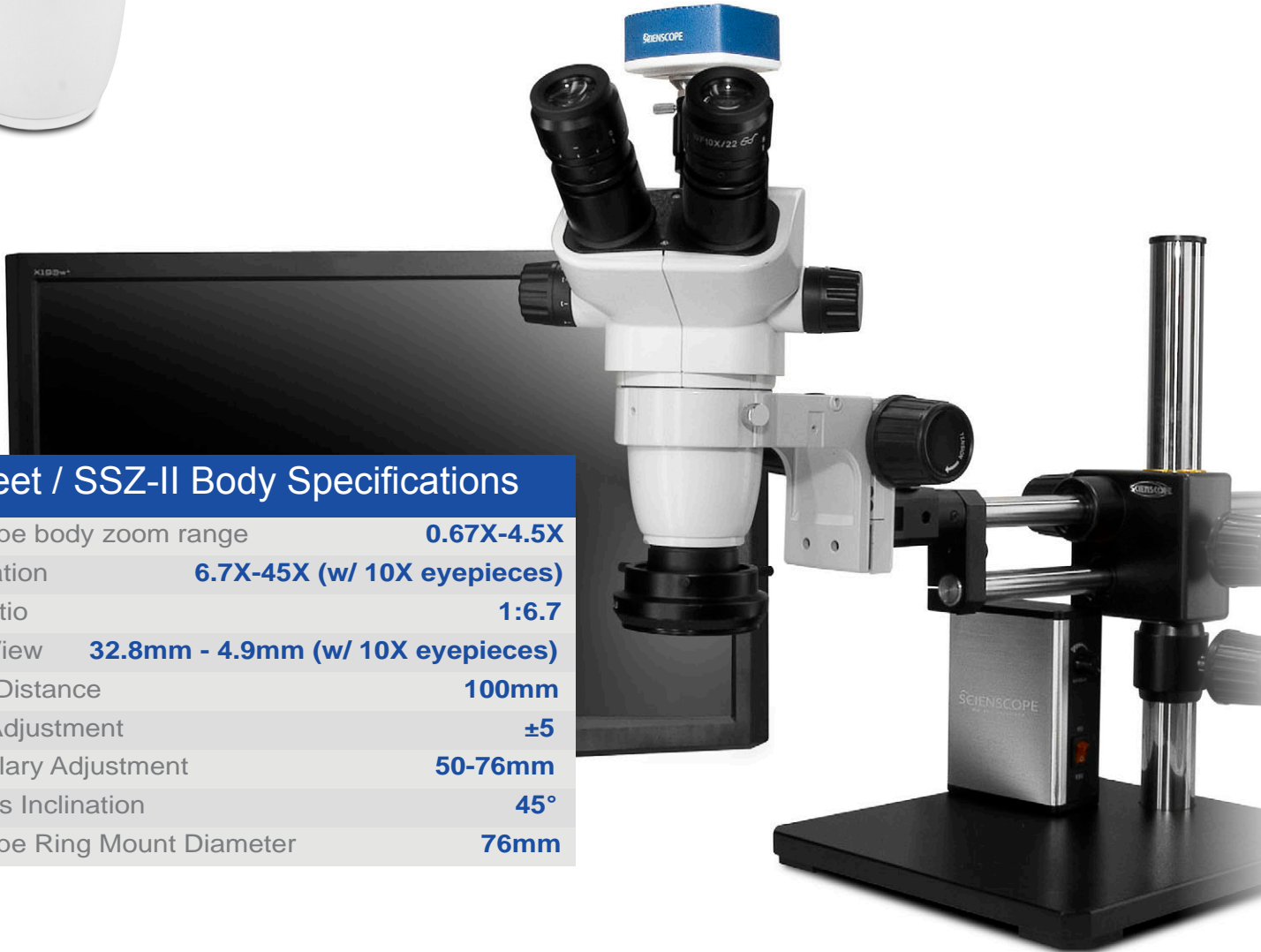
# SSZ-II Series 6.7X-45X

## Overview

With Long term reliability and customer satisfaction in mind we have redesigned the SSZ-II series stereo zoom microscopes. We have retained the core quality and technology while improving the ergonomics, optics, and performance.

## Features

- Quality construction and optics
- Largest variety of accessories
- Highest customer satisfaction
- True trinocular



## Data Sheet / SSZ-II Body Specifications

Microscope body zoom range	<b>0.67X-4.5X</b>
Magnification	<b>6.7X-45X (w/ 10X eyepieces)</b>
Zoom Ratio	<b>1:6.7</b>
Field of View	<b>32.8mm - 4.9mm (w/ 10X eyepieces)</b>
Working Distance	<b>100mm</b>
Dioptric Adjustment	<b>±5</b>
Interpupillary Adjustment	<b>50-76mm</b>
Eyepieces Inclination	<b>45°</b>
Microscope Ring Mount Diameter	<b>76mm</b>



# Precision and Value

The SSZ series is the cornerstone of Scienscope stereo zoom microscope line. The compact and durable design, incorporating the Greenough optical system, delivers exceptional flatness and depth of field as well as clarity and accurate color. With over 15 years of continued customer satisfaction the SSZ has remained Scienscope's most popular microscope.



## Built to Last

Precision CNC machine parts assembled to the leading industry standards extends the life of the microscope and lowers service and maintenance costs.

## User Friendly & Ergonomic

High eye-point eyepieces and ergonomically located zoom control make for one of the most comfortable user experiences of any non-parallel zoom system.

## New HD/USB Versa-Cam

With the new Scienscope Versa-Cam you will be able to view HD images in real-time on an HD LCD monitor and capture images to an SD card or connect to a computer via USB to capture images, annotate, and draw with included software.

## SSZ-II Binocular Optical Specifications

(See Page 18 for Video Specifications)

Objective Lens	Eyepieces				Working Distance
	10x		20x		
	MAG	FOV (mm)	MAG	FOV (mm)	
0.3X	2x-13.5x	109.5-16.3	4x-27x	59.7-8.9	287mm
0.4X	2.7x-18x	82.1-12.2	5.4x-36x	44.8-6.7	217mm
0.5X	3.4x-22.5x	65.7-9.8	6.7x-45x	35.8-5.3	177mm
0.75X	5x-33.8x	43.8-6.5	10.1x-67.5x	23.9-3.6	117mm
Default (1X)	6.7x-45x	32.8-4.9	13.4x-90x	17.9-2.7	100mm
1.5X	10.1x-67.5x	21.9-3.3	20.1x-135x	11.9-1.8	47mm
2X	13.4x-90x	16.4-2.4	26.8x-180x	9-1.3	26mm

## Optical Magnification Formula

Total Magnification = (Mag. of Eyepieces) X (Mag. of objective zoom range on body) X (Mag. of objective lens)

Included in standard packages

# NZ Series 8X-50X

## Overview

The Scienscope NZ series stereo zoom microscopes were designed expressly to meet the requirements of users who demand superior features and higher performance optics from a stereo zoom microscope.

## Features

- Quality construction and optics
- Long working distances
- Maintenance free
- True trinocular



## Data Sheet / NZ Body Specifications

Microscope body zoom range	<b>0.8X-5X</b>
Magnification	<b>8X-50X (w/ 10X eyepieces)</b>
Zoom Ratio	<b>1:6.3</b>
Field of View	<b>27.5mm - 4.4mm (w/ 10X eyepieces)</b>
Working Distance	<b>115mm</b>
Dioptric Adjustment	<b>±5</b>
Interpupillary Adjustment	<b>50-76mm</b>
Eyepieces Inclination	<b>45°</b>
Microscope Ring Mount Diameter	<b>76mm</b>



# High Performance

Featuring a zoom magnification of 5X and a long working distance of 115mm, the NZ Series is well suited for all industrial applications. The airtight design allows the microscope to be used in environments where the temperature and humidity are high. The NZ series trinocular is a true-trinocular using the highest quality beam splitter for an exceptionally flat image.



## Precision Optics

Precision polished optics provide a clear and defined image for accurate inspection or manual assembly, micro-soldering, or dissection.



## Maintenance Free

Airtight and anti-mold construction reduces need to perform regular maintenance. Save time and money in overall costs.



## New HD/USB Versa-Cam

With the new ScienScope Versa-Cam you will be able to view HD images in real-time on an HD LCD monitor and capture images to an SD card or connect to a computer via USB to capture images, annotate, and draw with included software.

## NZ Binocular Optical Specifications

(See Page 18 for Video Specifications)

Objective Lens	Eyepieces						Working Distance
	10x		15x		20x		
	MAG	FOV (mm)	MAG	FOV (mm)	MAG	FOV (mm)	
0.5X	4x-25x	55-8.8	6x-37.5x	40-6.4	8x-50x	31.2-5.0	211mm
DEFAULT (1x)	8x-50x	27.5-4.4	12x-75x	20-3.2	16x-100x	15.6-2.5	115mm
2x	16x-100x	13.8-2.2	24x-150x	10-1.6	32x-200x	7.8-1.3	43.5mm

**Included in standard packages**

## Optical Magnification Formula

Total Magnification = (Mag. of Eyepieces) X (Mag. of objective zoom range on body) X (Mag. of objective lens)

# ELZ Series 7X-30X



**PK 5** **AN** **R2E** **R3** **E1**  
Illumination Options  
ELZ-PK5-AN Shown



**PK 5S** **AN** **R2E** **R3** **E1**  
Illumination Options  
ELZ-PK5S-E1 Shown



**PK 5D** **AN** **R2E** **R3** **E1**  
Illumination Options  
ELZ-PK5D-R2E Shown



**PK 1** **AN** **R2E** **R3** **E1**  
Illumination Options  
ELZ-PK1-AN Shown



**PK 2** **AN** **R2E** **R3** **E1**  
Illumination Options  
ELZ-PK2-R2E Shown



**PK 3** **AN** **R2E** **R3** **E1**  
Illumination Options  
ELZ-PK3-R3 Shown

## ELZ ELZ Stereo Zoom Binocular Packages

All systems include the ELZ binocular body with 10x eyepieces, a 0.5x objective lens (except PK1 and PK2), your choice of stand and light. See the icons to the right to help you choose your package.

• Your package number should look like this **ELZ-PK5-AN**

- PK 1** Ergo Post Stand | 76mm Focus Rack
- PK 2** Ergo Track Stand | 76mm Focus Rack
- PK 3** Articulating Arm | 76mm Focus Rack
- PK 5** Gliding Arm Boom Stand | 76mm e-Arm  
0.5x Auxiliary Lens | Eye Guards
- PK 5D** Dual Arm Boom Stand | 76mm e-Arm  
0.5x Auxiliary Lens | Eye Guards
- PK 5S** Single Arm Boom Stand | 76mm e-Arm  
0.5x Auxiliary Lens | Eye Guards

- AN** LED Fiber Optic Illuminator  
Fiber Optic Annular Ring Light Guide
- R2E** 8 Point LED Ring Light  
(IL-LED-R2E)
- R3** High Intensity LED Ring Light  
w/ Polarizer (IL-LED-R3)
- E1** Compact LED Ring Light  
(IL-LED-E1)



# SSZ-II Series 6.7X-45X



**PK 5** **AN** **R2E** **R3** **E1**  
Illumination Options  
SZ-PK5-R2E Shown



**PK 5S** **AN** **R2E** **R3** **E1**  
Illumination Options  
SZ-PK5S-AN Shown



**PK 5D** **AN** **R2E** **R3** **E1**  
Illumination Options  
SZ-PK5D-AN Shown



**PK 1** **AN** **R2E** **R3** **E1**  
Illumination Options  
SZ-PK1-R2E Shown



**PK 2** **AN** **R2E** **R3** **E1**  
Illumination Options  
SZ-PK2-E1 Shown



**PK 3** **AN** **R2E** **R3** **E1**  
Illumination Options  
SZ-PK3-R3 Shown

## SSZ-II

### SSZ-II Stereo Zoom Binocular Packages

All systems include the SSZ binocular body with 10x eyepieces, a 0.5x objective lens (except PK1 and PK2), your choice of stand and light. See the icons to the right to help you choose your package.

• Your package number should look like this **SZ-PK5-AN**

- PK 1** Ergo Post Stand | 76mm Focus Rack
- PK 2** Ergo Track Stand | 76mm Focus Rack
- PK 3** Articulating Arm | 76mm Focus Rack
- PK 5** Gliding Arm Boom Stand | 76mm e-Arm  
0.5x Auxiliary Lens | Eye Guards
- PK 5D** Dual Arm Boom Stand | 76mm e-Arm  
0.5x Auxiliary Lens | Eye Guards
- PK 5S** Single Arm Boom Stand | 76mm e-Arm  
0.5x Auxiliary Lens | Eye Guards

- AN** LED Fiber Optic Illuminator  
Fiber Optic Annular Ring Light Guide
- R2E** 8 Point LED Ring Light  
(IL-LED-R2E)
- R3** High Intensity LED Ring Light  
w/ Polarizer (IL-LED-R3)
- E1** Compact LED Ring Light  
(IL-LED-E1)

# NZ Series 8X-50X



**PK 5** **AN** **R2E** **R3** **E1**  
Illumination Options  
NZ-PK5-R2E Shown



**PK 5S** **AN** **R2E** **R3** **E1**  
Illumination Options  
NZ-PK5S-AN Shown



**PK 5D** **AN** **R2E** **R3** **E1**  
Illumination Options  
NZ-PK5D-R3 Shown



**PK 1** **AN** **R2E** **R3** **E1**  
Illumination Options  
NZ-PK1-E1 Shown



**PK 2** **AN** **R2E** **R3** **E1**  
Illumination Options  
NZ-PK2-R2E Shown



**PK 3** **AN** **R2E** **R3** **E1**  
Illumination Options  
NZ-PK3-AN Shown

## NZ Stereo Zoom Binocular Packages

All systems include the NZ binocular body with 10x eyepieces, a 0.5x objective lens (except PK1 and PK2), your choice of stand and light. See the icons to the right to help you choose your package.

• Your package number should look like this **NZ-PK5-AN**

- PK 1** Ergo Post Stand | 76mm Focus Rack
- PK 2** Ergo Track Stand | 76mm Focus Rack
- PK 3** Articulating Arm | 76mm Focus Rack
- PK 5** Gliding Arm Boom Stand | 76mm e-Arm  
0.5x Auxiliary Lens | Eye Guards
- PK 5D** Dual Arm Boom Stand | 76mm e-Arm  
0.5x Auxiliary Lens | Eye Guards
- PK 5S** Single Arm Boom Stand | 76mm e-Arm  
0.5x Auxiliary Lens | Eye Guards

- AN** LED Fiber Optic Illuminator  
Fiber Optic Annular Ring Light Guide
- R2E** 8 Point LED Ring Light  
(IL-LED-R2E)
- R3** High Intensity LED Ring Light  
w/ Polarizer (IL-LED-R3)
- E1** Compact LED Ring Light  
(IL-LED-E1)

## SSZ-II Series 6.7X-45X



**PK 10** **AN R2E R3 E1**  
Illumination Options  
SZ-PK10-AN Shown



**PK 5S** **AN R2E R3 E1**  
Illumination Options  
SZ-PK10-R2E Shown



**PK 10** **AN R2E R3 E1**  
Illumination Options  
SZ-PK10-R3 Shown



**PK 10** **AN R2E R3 E1**  
Illumination Options  
NZ-PK10-R2E Shown



**PK 10** **AN R2E R3 E1**  
Illumination Options  
NZ-PK10-AN Shown

## NZ Series 8X-50X



**PK 10** **AN R2E R3 E1**  
Illumination Options  
NZ-PK10-E1 Shown



**PK 10** **AN R2E R3 E1**  
Illumination Options  
NZ-PK10-R2E Shown



**PK 10** **AN R2E R3 E1**  
Illumination Options  
NZ-PK10-AN Shown

**SSZ-II**

**NZ**

**Stereo Zoom  
Trinocular Packages**

All systems includes a trinocular body with 10x eyepieces, a 0.5x objective lens, your choice of light. See the icons to the right to help you choose your package.

- Your package number should look like this **SSZ-PK10-AN**

**PK 10**

**Dual Arm Boom Stand | 76mm e-Arm  
0.5x Auxiliary Lens | Eye Guards | Video Coupler**

**1080p HDMI / USB camera**  
(Includes SD card, USB cable & Mouse)

**23" HD LCD Monitor | Capture Software**

**AN**

**LED Fiber Optic Illuminator**  
Fiber Optic Annular Ring Light Guide

**R2E**

**8 Point LED Ring Light**  
(IL-LED-R2E)

**R3**

**High Intensity LED Ring Light**  
w/ Polarizer (IL-LED-R3)

**E1**

**Compact LED Ring Light**  
(IL-LED-E1)



# HDMI High-Resolution Digital Cameras



## CC-CMC-LCD10

The CC-CMC-LCD10 is an all-in-one camera and monitor combination that converts any trinocular microscope into a video system! The camera boasts a beautiful 720p image that can be captured to an included 8GB SD card. Control all of your video settings using a remote control and onscreen display.

### 10" HD Camera + Monitor Combination

- 1280 x 800 resolution @ 60 fps (24-bit)
- 1/2.5" CMOS
- Image Capture without a PC
- HDMI output with wide screen format
- Multiple cross hairs for quick gaging
- Super easy auto-white balance for color accuracy



## CC-CMC-LCD10 | Specifications

Sensor:	CMOS; 1/2.5"	Exposure:	auto/manual
Resolution:	1280 x 800 @ 60 fps (24-bit), 16:10 Aspect Ratio	Contrast:	manual
Frame rate:	60fps	Memory:	slot SD (Up to 32GB)
Pixel count:	2 mega pixel	Memory card:	SD/USB 2.0 Dual-Interface 2GB card included
Pixel Size:	3.75 x 3.75um	Cross hair grid:	Up to 4 horizontal and 4 vertical
Color:	RGB (individual adjustment)	Power:	12VDC
White balance:	auto/manual	Lens Mount:	C Mount

### SD Storage Interface

4 GB SD/USB Flash Memory Card Included



### Wired Remote

Control function:  
(R.G.B., Gain, Cross Hair Generator,  
Exposure, Image Capture, and sharpening)





# HD/USB High-Resolution Cameras / FOV Measurement Software

## Versa-Cam | CC-HDMI-CD2



The new Versa-Cam from Sciencscope is the next step in the evolution of our powerful line of digital HD cameras for microscopy. The Versa-Cam can be used as a "live image" HD (1080p) camera connected to a monitor using an HDMI cable or as a USB 2.0 camera with USB cable connected to any computer or Windows Tablet. Now the choice between live HD monitor inspection and high resolution USB camera capture and annotation is made at the camera...not between cameras.

### Features | HD/HDMI Mode

- 1080p (1920 x 1080) HD image @60fps
- Onscreen control bar and setting menu
- Image and video capture to SD card
- Split-screen live image  
| Captured image comparison (Picture in Picture)
- Image and video gallery / Image and video review
- Vertical and horizontal line generator
- Save line generator configurations
- Wireless mouse support and control

### Features | USB 2.0 Mode

- 2 Mega-pixel resolution (1920 x 1080)
- Image and video capture with windows 8 or 10 camera app
- Image and video capture to SD card
- Email, Save, or Print images
- Image and video capture using included software
- Annotation and drawing tools on live or captured images
- **Upgrade software with FOV measurement tools**



1920 x 1080  
AT 60 FPS

HDMI  
DIRECT OUTPUT

CMOS

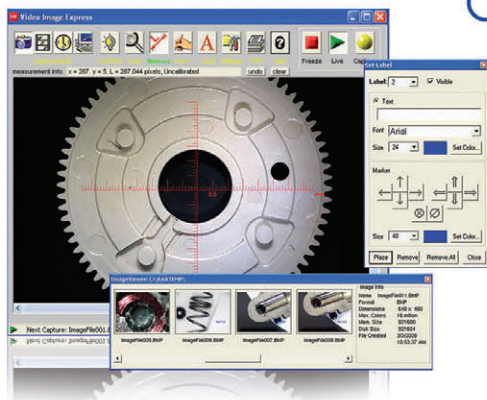


## CC-HDMI-CD2 | Specifications

Image sensor:	1/2.86 Inch Panasonic FULL HD 2.0 Megapixel
Effective pixels:	1920 x 1080
Frame rate:	60fps
Definition:	More than 1200lines (the highest level)
Housing:	Aluminum
White balance:	Automatic/Manual/Continuous
Brightness control:	Automatic/Manual/Continuous
Color:	R/G/B adjustable
Edge enhancement:	Yes
OSD:	Yes, in HDMI mode

Freeze image:	Yes
HDR:	Yes
Edge enhancement	Yes
/Sharpening	
SD card slot:	Supports up to 32GB SD card
Cross Hair:	Multi-color, small or large
Horizontal & vertical lines:	Multi-color, two lines for each (positions can be moved)
Noise Reduction:	Support
HDMI:	1080P
USB:	USB 2.0

## CC-VIE-2008



Video measurement, capture, and annotation software. Video Image Express is the one and only solution for adding a simple and easy way to capture, annotate and measure images on any Stereo Microscope, Video Inspection System, or Camera Based Optical Inspection Device. When it comes to Image Capture and Video Documentation, our unique "Live Image" capability increases work flow dramatically by providing tools designed with one word in mind "Simplicity".

- Use any USB 2.0 computer
- Live Display makes adding annotation easy
- Simple Text, Arrow, and Drawing Tools
- Live Go/No Go Capabilities
- Easy to Use Drag Tools allow measurements on the Live Image
- Calibrated Reticule in Inches and Millimeters

- Supports USB 2.0 and 3.0
- Fast Measurement Tools on Live Image
- One Click Print and E-mail system
- Stored Calibrations
- Perpendicular Line width measurements
- Stored Calibrations

# Fiber Optic

LED and Halogen Fiber Optic  
Cold light precision solutions



## IL-FOI-L24A

### Low Noise LED Fiber Optic Illuminator

- Small Low Noise CPU Fan
- Smaller footprint; use less desktop space
- Compatible with most fiber optic cables or guides
- Life: 10,000 hrs
- Color temperature: 6000~7000k
- LED power: 24W
- Filters available: Yellow, Red, Blue

#### SPECIFICATIONS

Luminosity/Brightness	5.3 kfc
Life	10,000 hrs
Color temperature	6000~7000k
Power input	85~265 VAC
Power output	24 VAC
Fiber Adapter	5/8"
Dimensions	3.75"W x 6"D x 5.75"H
LED Power	24Watt
Warranty	1 Year
Optional Light Filters:	Red, Blue, and Yellow



## IL-FOI-150

### Halogen Fiber Optic Illuminator

- New Voltage Readout
- New design for easy lamp replacement.
- Protection against overload.
- Ideal for microscope applications.
- Internal light filters holder.

#### SPECIFICATIONS

Brightness	23000LU
Color temperature	3200k (at full output)
Power input	90V - 265V
Power output	5V - 21V
Fiber Adapter	Φ 20
Dimensions	W210 x D170 x H130 (mm)
Power Consumption	150Watt / 21Volt
Bulb Life	200 Hrs (longer if used at 50% output)
Fuse	2 Amps "Slo Blo"
Warranty	1 Year
Optional Light Filters:	Red, Blue, Green, and Yellow
Replacement Bulb:	EKE Halogen 12V 150W Bulb
Replacement Lamp:	IL-FOI-150-LS



## FC-A2-36

### Fiber Optic Ring Light Guide

- High quality glass fiber.
- Provides continuous 360° shadow-free light.
- Uniform illumination of white light.
- Large fiber bundle assures maximum light transmission.
- Ideal for general optical and video inspection applications.

#### SPECIFICATIONS

Numerical Aperture	0.54
Acceptance angle	55°
Color temperature	5870 K
Fiber diameter (μm)	50
Bundle length (M)	≤10
Fiber Length	36"
Inner Diameter	2.3"
End Adapter Diameter	5/8" (Standard)
Warranty	1 Year



## FC-DP-18 and FC-SP-18

### Fiber Optic Dual and Single Pipe Light Guides

- High quality glass fiber.
- Excellent for precision lighting and transmission.
- Large fiber bundle assures maximum light transmission.
- Ideal glare reduction for video applications and focused direct lighting requirements.

#### SPECIFICATIONS

Numerical Aperture	0.54
Acceptance angle	55°
Color temperature	5870 K
Fiber diameter (μm)	50
Bundle length (M)	≤10
Fiber Length	18"
End Adapter Diameter	5/8" (Standard)
Warranty	1 Year



# UV-Free LED

Cost-effective, long lasting lighting systems



## IL-LED-R3

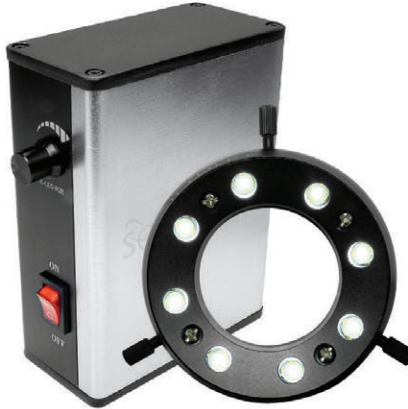
120 LED Ring Illuminator with Polarizer

- UV Free
- 120 High quality white LED's
- Adjustable/dimming control
- Compact design
- Includes quick release polarizer

### SPECIFICATIONS

Color temperature  
Luminosity/Brightness  
Power input  
Power output  
Inner diameter  
Life  
LED Power  
Number of LEDs  
Light Intensity Control  
Warranty

6000k~7000k  
2kfc  
24VDC 0.5A  
24VDC 500ma  
2.4"  
10,000h  
6W  
120  
Yes  
1 Year



## IL-LED-R2E

8-Point Precision LED Light Source

- UV Free
- 8-point high quality LED light
- Adjustable/dimming control
- Optimum angle for even distribution of light
- Luminosity/brightness: 2.2 kfc (thousand foot candles)
- Color temperature: 6000k~7000k (cool white light)
- Inner diameter: 2.4"

### SPECIFICATIONS

Color temperature  
Luminosity/Brightness  
Power input  
Power output  
Inner diameter  
Life  
LED Power  
Number of LEDs  
Light Intensity Control  
Warranty

6000k~7000k  
2.2kfc  
96-265VAC  
30VDC  
2.4"  
50,000h  
8W  
8  
Yes  
1 Year



## IL-LED-R2D

Defused LED Dome

- Adjustable Defusion Dome
- Reduces Glare for Video Applications
- UV Free
- Color Temperature: 6000k~7000k
- Alternative to Polarizers

### SPECIFICATIONS

Brightness  
Color temperature  
Power input  
Power output  
Inner diameter  
Life  
LED Power  
Number of LEDs  
Light Intensity Control  
Warranty

1.9kfc  
6000k~7000k (cool white light)  
96-265VAC  
30VDC  
1.6"  
50,000h  
6W  
8  
Yes  
1 Year



## IL-LED-E1 and IL-LED-E2D

Ultra-compact LED Light Source

- UV-Free.
- 360° multi-point LEDs.
- Built-in transformer.
- Less reflection on specular surfaces with IL-LED-E2D

### SPECIFICATIONS

Luminosity/Brightness  
Color temperature  
Power input  
Power output  
Inner diameter  
Power cord length  
Life  
Watt  
Quantity of LED ball  
Light Intensity Control  
Warranty

2.2 kfc  
3500k  
90-265VAC  
22VDC  
2.3"  
1.5M  
50,000h  
6W  
60  
Yes  
1 Year



Available in Ultra Violet (UV)

## Boom Stands



### SB-BM2-D0

#### Dual Arm Boom Stand

- Linear ball bearings provide smooth gliding motion. Ideal for image capturing.
- Designed to support large research grade microscopes as well as smaller units.
- Ideal for assembly and rework applications.

Total Weight	40lbs
Dimensions of Base	10.25" x 11.25" x 0.7"
Horizontal Arm	20" Length; 0.8" Diameter
Vertical Post	15" Length; 1.47" Diameter
Mounting Dowel	5/8"
Tip Over Weight	21 lb
Safety Collar	Yes
Warranty	1 Year
Optional 24" Vertical Post	(SB-BM2-S024)



### SB-BM2-R0

#### Gliding Arm Boom Stand

- Premium hard-coat anodized finish
- Precision light weight rail assembly
- Smooth fluid horizontal movement
- Ideal for clean room applications

Total Weight	40lbs
Dimensions of Base	9.5" W x 11.25" D x 1" H
Horizontal Arm	20" Length
Vertical Post	12" Length; 1.38" Diameter
Vertical Extension (included)	9"
Mounting Dowel	5/8"
Tip Over Weight	21 lb
Safety Collar	Yes
Warranty	1 Year



### SB-BM2-S0

#### Single Arm Boom Stand

- Solid cross block and brass inserts to improve movement.
- Perfect for routine inspection of large samples where continuous horizontal movement of the microscope is not required.
- Economic and sturdy.

Total Weight	35lbs
Dimensions of Base	10.25" x 11.25" x 0.7"
Horizontal Arm	19" Length; 0.8" Diameter
Vertical Post	15" Length; 1.47" Diameter
Mounting Dowel	5/8"
Tip Over Weight	21 lb
Safety Collar	Yes
Warranty	1 Year
Optional 24" Vertical Post	(SB-BM2-S024)



## Articulating Arms



### SB-HX-S0

#### Light-Weight Flexible Stand

- Lift and pivot motion easily extend and retract your microscope.
- Compact design frees up space and improves productivity.
- Light weight and ergonomic design

Total Weight	11 lbs
Clamp Size	4" x 3" x 4.5"
Maximum bench width	6"
Free Revolution in Horizontal Direction	360°
Up/Down Tilt	+75/-5°
Mounting Dowel	5/8"
Weight Capacity	20 lbs
Warranty	1 Year



### SB-FX-01

#### Heavy-Duty Flexible Stand

- Adjustable counter-balanced arm allows easy, hand guided movement.
- Works in spaces where a conventional boom stand will not fit.
- Rugged and ideal for a wide range of inspection applications.

Total Weight	15 lbs
Clamp Size	4" x 3" x 4.5"
Maximum bench width	2"
Free Revolution in Horizontal Direction	360°
Maximum Radius	31.5"
Minimum Radius	2.76"
Maximum Opening Angle	0-45°
Mounting Dowel	5/8"
Weight Capacity	20 lbs
Warranty	1 Year



### SB-CL2-FX (Clamp base) and SB-TM2-FX (Bolt down base)

#### Heavy-Duty Flexible Stand w/ Vertical Post

- 15" Steel vertical post to free up bench space.
- Rugged and ideal for a wide range of inspection applications.
- Adjustable counter-balanced arm allows, easy, hand guided movement.
- Easy to lock in focal distance.

Total Weight	30 lbs
Vertical post	15" Length; 1.47" Diameter
Clamp Size	2.75" wide x 2" deep CL2 model
Maximum bench width	2.75"
Horizontal Arm Length	11.96"
Gradient Arm Length	17.52"
Front Arm Length	6.77"
Free Revolution in Horizontal Direction	360°
Maximum Radius	31.5"
Minimum Radius	2.76"
Maximum Opening Angle	0-45°
Diameter mounting hole (front arm)	5/8"
Diameter mounting hole (end base)	0.87"
Weight Capacity	18.74 lbs
Warranty	1 Year



### SB-AB-SZ

#### Microscope Focus Mount

Microscope Rack	76mm Standard
End Adapter	5/8" (15.875mm)
Focusing Travel Distance	±1"
Warranty	1 Year

## Table Top Stands



### CMO-DST-L2

#### Dual Zone LED lighting/Fine Focus

- Ideal for critical focusing at high magnification.
- Adjustable LED transmitted and reflected light.
- Rack & pinion adjustment for smooth movement.

Total Weight	7.4 lbs
Dimensions	9.5"W x 11"D x 13.5"H
Microscope rack	76mm Standard
Vertical Travel Distance	4"
Warranty	1 Year



### CMO-ST-L2

#### Dual Zone LED Lighting Stand

- Ideal for critical focusing at high magnification.
- Rack & pinion for smooth movement.
- Ideal for smaller parts or crowded work areas.

Total Weight	7 lbs
Dimensions	9.5"W x 11"D x 13.5"H
Microscope rack	76mm Standard
Vertical Travel Distance	4"
Warranty	1 Year



### ST-76-LGT

#### Extended heavy-duty stand

- Extended vertical post for greater working distance.
- Rack and pinion focusing with safety collar.
- Ideal for smaller parts or crowded work areas.

Total Weight	9 lbs
Dimensions of Base	20.75"H x 12.5"W x 12"L
Focus Mount/E-Arm	76mm Standard
Lowest Travel Distance from Base to E-arm	6"
Highest Travel Distance from Base to E-arm	10"
Warranty	1 Year



### ST-76-LG

#### Ergo-Track Stand

- Large, flat, ergonomic base.
- Perfect for prolonged viewing of small parts.
- Rugged vertical gear track.

Total Weight	9 lbs
Dimensions	13.75"H x 12.5"W x 12"L
Microscope rack	76mm Standard
Lowest Travel Distance from Base to E-arm	6"
Highest Travel Distance from Base to E-arm	10"
Warranty	1 Year



### SP-76-18

#### Ergo-Post Stand

- Large, flat, ergonomic base.
- Perfect for prolonged viewing of small parts.
- Rugged vertical gear track.

Total Weight	9 lbs
Dimensions of Base	13.75"H x 12.5"W x 12"L
Focus Mount/E-Arm	76mm Standard
Lowest Travel Distance from Base to E-arm	6"
Highest Travel Distance from Base to E-arm	10"
Warranty	1 Year

## SSZ-II Trinocular Video Specifications

Objective Lens	Video Coupler				Working Distance
	10x		20x		
	MAG	FOV (mm)	MAG	FOV (mm)	
0.3X	7x-47.1x	100-13	14x-94.3x	60-8.6	287mm
0.4X	9.4x-62.9x	75-10	18.7x-125.7x	45-6.5	217mm
0.5X	11.7x-78.6x	60-8	23.4x-157.2x	36-5.2	177mm
0.75X	17.5x-117.9x	40-5.3	35.1x-235.7x	24-3.5	117mm
Default (1X)	23.4x-157.2x	30-4	46.8x-314.3x	18-2.6	100mm
1.5X	35.1x-235.7x	20-2.6	70.2x-471.5x	12-1.8	47mm
2X	46.8x-314.3x	15-2	93.6x-628.7x	9-1.3	26mm

Included in standard packages

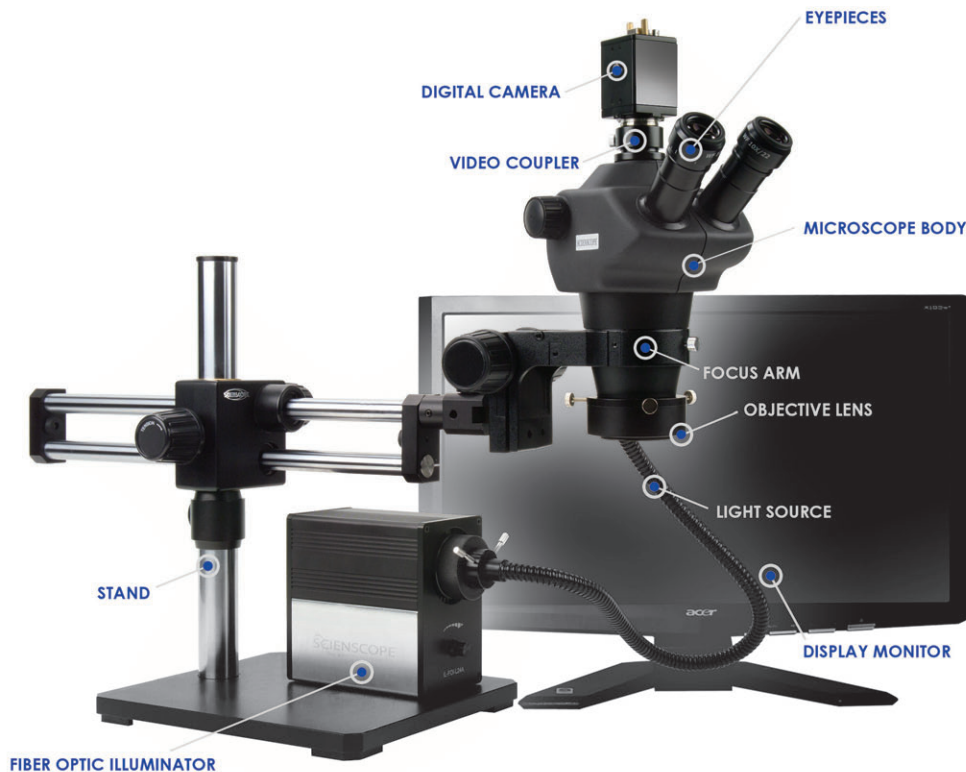
## NZ Trinocular Video Specifications

Objective Lens	Video Coupler		Working Distance
	0.4x		
	Magnifications	Field Of View <sub>(mm)</sub>	
0.5X	11.2x-69.9x	49.97-7.99	211mm
DEFAULT (1x)	22.4x-139.7x	24.98-3.99	115mm
2x	44.7x-279.4x	12-2	43.5mm

Included in standard packages

### Optical Magnification Formula

Total Magnification = (Mag. of CCD) X (Mag. of objective zoom range on body) X (Mag. of objective lens) X (Diagonal display)



## Anatomy of a Stereo Zoom Microscope System

A typical Stereo Zoom Trinocular System Configuration with direct output to the LCD monitor. SCIENSCOPE pre-configured system packages can be found at P.7-10

Please contact us if you are in need of a customized system setup that is not listed under our pre-configured system page. We also offer on-site product demonstration and assistance.

## Standard Microscope Bodies

**5 Years** All microscope bodies come with a 5 year manufacturer's warranty.

Item	Part Number
SSZ-II Binocular Microscope Body	SZ-BD-B2A
SSZ-II Trinocular Microscope Body	SZ-BD-T3A
NZ Binocular Microscope Body	NZ-BD-B2
NZ Trinocular Microscope Body	NZ-BD-T3
ELZ Binocular Microscope Body	ELZ-BD-B2
NZ ESD Trinocular Microscope Body	NZ-BD-T3-ESD
NZ ESD Binocular Microscope Body	NZ-BD-B2-ESD



## Eyepieces/Eyecups

**5 Years** All eyepieces come with a 5 year manufacturer's warranty.

Item	Part Number
SSZ-II Eyepieces (20X)   pair	SZ-LE-W20
SSZ-II Eyepieces (10X)   pair	SZ-LE-W10
NZ Eyepieces (20X)   pair	NZ-LE-W20
NZ Eyepieces (15X)   pair	NZ-LE-W15
NZ Eyepieces (10X)   pair	NZ-LE-W10
ELZ Eyepieces (20X)   pair	ELZ-LE-W20
ELZ Eyepieces (15X)   pair	ELZ-LE-W15
ELZ Eyepieces (10X)   pair	ELZ-LE-W10
NZ/ELZ Eye Guard   pair	NZ-88-EC

### SSZ-II



### NZ



### ELZ



## Objective Lens

**5 Years** All objective lens come with a 5 year manufacturer's warranty.

Item	Part Number
SSZ-II Objective Lens (2X)	SZ-LA-20
SSZ-II Objective Lens (1.5X)	SZ-LA-15
SSZ-II Objective Lens (0.75X)	SZ-LA-07
SSZ-II Objective Lens (0.5X)	SZ-LA-05
SSZ-II Objective Lens (0.4X)	SZ-LA-04
SSZ-II Objective Lens (0.3X)	SZ-LA-03
SSZ-II Protective Lens	SZ-LA-CG
NZ Objective Lens (2X)	NZ-LA-20
NZ Objective Lens (0.5X)	NZ-LA-05
ELZ Objective Lens (2X)	ELZ-LA-20
ELZ Objective Lens (0.5X)	ELZ-LA-05

### SSZ-II



### NZ



### ELZ





## SSZ-II



SSZ-II Video Coupler  
(0.5X)



SSZ-II Video Coupler  
(1X)

## NZ



NZ Video Coupler  
(0.4x)

## Video Couplers

**5 Years**

All video couplers come with a 5 year manufacturer's warranty.

Item	Part Number
SSZ-II Video Coupler (1X)	SZ-CP-10A
SSZ-II Video Coupler (0.5X)	SZ-CP-05A
NZ Video Coupler (0.4X)	NZ-CP-04



1080p HD  
HDMI Camera



720p HD  
Camera/Monitor Combo

## Digital Cameras

**1 Year**

All cameras come with 1 year manufacturer's warranty.

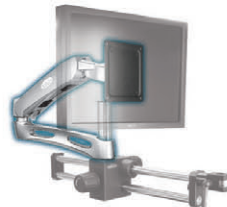
Item	Part Number
720p HD Camera/Monitor Combo	CC-CMC-LCD10
1080P HD HDMI/USB 2.0 Camera	CC=HDMI-CD2



23" LCD Monitor



Desktop LCD Mount



LCD Mount for Single/Dual  
Arm Boom Stands

## Monitors & Mounts

**1 Year**

All monitors and monitor arm mounts come with 1 year manufacturer's warranty.

Item	Part Number
8" Color LCD Monitor	CC-LCD-08
10" Color LCD Monitor	CC-LCD-10
23" Color HDMI LCD Monitor	CC-LCD-23H
Desk Mount Arm for LCD Monitor	CC-MM-20
LCD Monitor Mount for Boom Stand	CC-MM-20B



Compact LED  
Ring Light



8-Point LED  
Ring Light



120 LED w/Polarizer  
Ring Light



Defused LED Dome



LED Fiber Optic Illuminator



Fiber Optic Annular Ring Light



Fiber Optic Dual Pipe Light

## Light Sources

**1 Year**

All light sources come with 1 year manufacturer's warranty.  
LED light is 3 years.

Item	Part Number
8-Point LED Ring Light ID: 2.4"	IL-LED-R2E
LED Ring Light w/ built-in power supply	IL-LED-E1
Defused LED Dome	IL-LED-R2D
LED Fiber Optic Illuminator ESD	IL-FOI-L24A
Defuse LED light	IL-LED-E2D
Fiber Optic Annular Ring Light	FC-A2-36
Fiber Optic Dual Pipe Light	FC-DP-18
120 LED Ring Light w/ Polarizer	FC-DP-18



Polarizer for Fiber Optic  
Annular Ring Light (FC-A2-36)



Polarizer for  
8-Point LED Ring Light  
(IL-LED-R2E)



Polarizer for  
6-Point LED Ring Light  
(IL-LED-R1E)



Color Filter Kit  
for LED Fiber Optic  
Illuminator  
(IL-FOI-L24)

## Filters

**1 Year**

All filters come with 1 year manufacturer's warranty.

Item	Part Number
Polarizer for IL-LED-R2E	IL-LED-R2EP
Polarizer for IL-LED-R1E	IL-LED-R1EP
Polarizer for FC-A2-36	IL-AN-PLRZ
Fiber Optic Illuminator Color Filter Kit	IL-FOI-L24-FK

## Stands/Arms

**1 Year**

All stands and focus mounts come with 1 year manufacturer's warranty.

Item	Part Number
Gliding Boom Stand	SB-BM2-R0
Dual Arm Boom Stand	SB-BM2-D0
Single Arm Boom Stand	SB-BM2-S0
Focus Mount	SB-AB-SZ
Extended Heavy-Duty Track Stand	ST-76-LGT
Ergo-Track Stand	ST-76-LG
Dual Illuminated Track Stand	CMO-ST-L2
Dual Illuminated Track Stand w/ Coarse & Fine Focus	CMO-DST-L2
Post Stand w/ Extended Post	SP-76-18
Articulating Arm (Black)	SB-FX-01
CF Articulating Arm	SB-HX-S0
Heavy-Duty Articulating Arm (Vertical Post)	SB-CL2-FX (Clamp base)
	SB-TM2-FX (Bolt down base)
Dual/Single Arm Boom Stand Vertical Post (24")	SB-BM2-S024



Gliding  
Boom Stand



Dual Arm  
Boom Stand



Single Arm  
Boom Stand



Focus Mount



Extended Heavy-Duty  
Track Stand



Ergo-Track Stand



Dual LED Track Stand  
w/ Fine Focus



Dual LED  
Track Stand



Post Stand w/  
Extended Post



Articulating  
Arm



CF Articulating  
Arm



Dual/Single Arm  
Boom Stand  
Vertical Post (24")



Heavy-Duty Articulating  
Arm on Vertical Post

## Adapters

**1 Year**

All items come with 1 year manufacturer's warranty.

Item	Part Number
Ring Adapter for SSZ-II/SSZ Body	SZ-LA-10
Focus mount adapter for Macro Zoom lens	SB-76-47
Focus mount adapter for Micro Zoom lens	SB-76-39



Ring Adapter  
for SSZ-II Series



Focus Mount  
Adapter for  
Micro Zoom lens



Focus Mount  
Adapter for  
Macro Zoom lens

## Magnifiers

**1 Year**

All magnifiers come with 1 year manufacturer's warranty.

Item	Part Number
ML-5000 LED w/ 5-diopter lens	ML5-5D-LED



ML-5000 Series

Lens Type	Glass
Lens Viewing Area	5.7" Diameter
Arm Length	35"
Watt	5W 64 arrays of LEDs
Shade	Plastic
Table clamp	Up to 2.5"
ESD Safe Available	No
Available Diopters	3 and 5 Diopters
Magnification	1.75x or 2.25x
Focal length	13" or 8"

## Replacement Light Bulbs

All light bulbs have no manufacturer's warranty.

Item	Part Number
ML-4000 magnifier bulb	ML4-RB-28W-SQR
ML-3000 magnifier bulb	ML3-13W-BLB
ML-2000/1000 magnifier bulb	ML12-22W-BLB
Fluorescent bulb for IL-FR-24	IL-FR-24B
Fluorescent bulb for IL-FR-21	IL-WH-MLB
Fiber optic illuminator bulb for IL-FOI-150	IL-RA-FB



ML4000 Magnifier bulb



ML3000 Magnifier bulb



ML2000/1000  
Magnifier bulb



Fluorescent Ring Light  
for Model: IL-FR-24



Fluorescent Ring Light  
for Model: IL-FR-21



Halogen bulb  
for IL-FOI-150





# SCIENSCOPE

## COMPANY PROFILE

Scienscope is an industrial (NDT) solution provider committed to the best price to performance ratio we can offer. In business since 1994, Scienscope serves all areas of manufacturing in North America through a network of technical sales representatives and distributors. It is our mission to provide the most innovative and cost effective solutions for our customers' inspection problems. We are continuously developing new products and software to meet your needs.

The Scienscope inspection division is the core of our business. Our product line extends from benchtop magnifiers, stereo zoom microscopes, video inspection systems, video recognition systems to video measurement systems, and measurement software. As well, Scienscope manufactures industrial cabinet style micro focus X-Ray machines. Most of our products can be demonstrated on-site or online, please contact your local representatives or Scienscope directly for details. Please visit our website [www.scienscope.com](http://www.scienscope.com) for more product information and contacts. We appreciate the opportunity to do business with your company, let us know how we can help.

## TERMS AND CONDITIONS

PRICES AND SPECIFICATIONS SUBJECT TO CHANGE WITHOUT NOTICE. SCIENSCOPE RESERVES THE RIGHT TO CORRECT PRINTING ERRORS. PRODUCTS ARE SHIPPED FOB CHINO, CA VIA UPS OR FEDEX UNLESS OTHERWISE SPECIFIED. PRODUCT MAY NOT BE RETURNED WITHOUT SCIENSCOPE APPROVAL, PLEASE CONTACT SCIENSCOPE DIRECTLY FOR RETURN AUTHORIZATION AND CONDITIONS.

## PRODUCT WARRANTY

SCIENSCOPE OFFERS A 5-YEAR WARRANTY ON ALL ITS OPTICAL PRODUCTS; INCLUDING MICROSCOPES, AUXILIARY LENSES, VIDEO COUPLERS, VIDEO LENSES, DIGITAL CAMERA ADAPTERS. ALL OTHER SCIENSCOPE PRODUCTS ARE WARRANTED FOR A 1-YEAR PERIOD, INCLUDING STANDS, FOCUS MOUNTS, LIGHT SOURCES, LIGHT GUIDES, CAMERAS AND MONITORS; BULBS ARE NOT WARRANTED.

SCIENSCOPE HAS THE RIGHT TO REPLACE OR EXCHANGE, AT ITS OPTION, ANY AND ALL PRODUCTS SENT BACK FOR WARRANTY SERVICE. WARRANTY SERVICE WILL BE PERFORMED BY SCIENSCOPE WHEN A RMA NUMBER IS OBTAINED. THE DEFECTIVE EQUIPMENT MUST BE RETURNED, POSTPAID, TO SCIENSCOPE WITH THE RMA NUMBER IN THE "ATTENTION TO" SECTION.

PRODUCTS DETERMINED BY SCIENSCOPE TO BE ABUSED, MISUSED OR USED IN A NEGLIGENT MANOR ARE NOT COVERED UNDER THIS WARRANTY. DAMAGE RESULTING FROM THE ATTEMPTED REPAIRS BY UNAUTHORIZED PARTIES OR DAMAGE DUE TO ACCIDENT WILL NOT BE COVERED.

All specifications subject to change without notification.

## CONTACT INFORMATION

**Business Hours** Monday ~ Friday (8AM~5PM Pacific Standard Time)

**Phone** (800) 216-1800 Toll-Free, (909) 590-7273

**FAX** (909) 494-5513

**Address** 5751 Schaefer Ave. Chino, CA 91710

**Website** <http://www.scienscope.com/>

**E-Mail** [info@scienscope.com](mailto:info@scienscope.com)

SOME OF OUR CUSTOMERS



**FLEXTRONICS**

**FOXCONN**



**JABIL**

**Raytheon**

**NORTHROP GRUMMAN**



**Boston Scientific**



**SANMINA-SCI**

**ST. JUDE MEDICAL**  
MORE CONTROL. LESS RISK.



**Celestica**

**Scienscope**

5751

