

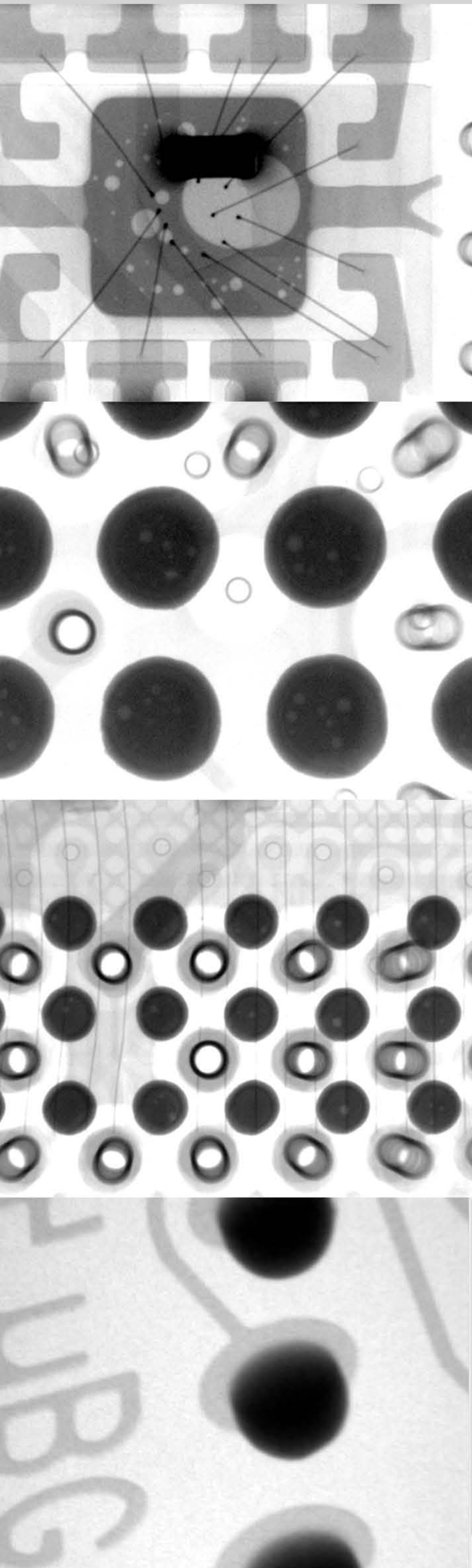
# SCIENSCOPE X-SCOPE 6000

## 130kV, 5 Micron Microfocus X-RAY Inspection System

The Xspection 6000 is a Digital fully programmable CNC controlled x-ray inspection system that allows operators to program inspection and measurement routines with point and click ease.



X-SCOPE 6000



### Key features

- Technologically Advanced X-Ray Inspection System
- High Power 130kV 5 Micron Closed X-Ray Tube
- 5"x5" / 4"x3" High Resolution Digital Flat Panel Image Detector
- 20" x 24" Inspection Stage with **360°** Rotation
- 70° Camera Tilt for Oblique Extreme Angle Inspection
- Incredible 1,000X System Magnification
- Mega pixel mapping camera with zoom window - easy location and identification of faults
- Computer controlled kV and mA settings
- Programmable computer controlled - variable speed X-Y stage
- Simple point and click inspection routines

### Industrial Applications

- Multilayer PCBs
- Inner layer registration
- Through hole plating inspection
- Fine pitch solder joint integrity
- BGA - micro BGA - flip chip inspection
- Encapsulated components
- BGA - SMT rework verification and failure analysis

### User Interface

Menu Bar

Video Enhance Tool

Program Control

Measurement Tools

X-Ray Power & System Status Indicator

Video Control

Motion Control Panel

Mapping Camera Target

Stage View Panel Mapping Camera

Main Display Panel

## X-Ray Tube

Tube Style	Closed Type
Tube Voltage	130kV
Tube Current	0.15mA
Focal Spot Size	5 Micron
Tube Cooling	Forced Air
Geometric Magnification	250X
System Magnification	1000X

## Digital Flat Panel X-Ray Detector

Speed	30 FPS
Grayscale	14-bit (16,384 shades of grayscale)
Resolution	100 $\mu$ m (1.6MP) with 5"x5" flat panel detector 50 $\mu$ m (3MP) with 4"x3" high resolution flat panel detector

## X-Ray Cabinet

Dimension	1500mm (L) x 1600mm (W) x 1600mm (H) 59" (L) x 62.9" (W) x 62.9" (H)
Sample Table Size	500mm x 600mm 19.6" x 23.6"
Detector Tilt	70 degree
Sample Table Movement	X Axis 360mm, Y Axis 400mm Z Axis 400mm X Axis 14.1", Y Axis 15.7" Z Axis 15.7"
Weight	1600 kg (3527.3 lbs) Steel - Lead - Steel welded construction

## Power

Automatic switching power supply	110 - 230 VAC 50/60 Hz
----------------------------------	------------------------

## Computer

Operating System	Microsoft Windows 7 PRO
------------------	-------------------------

## Warranty

One year, parts and labor

## Compliance

THE SCIENSCOPE X-SCOPE X-RAY INSPECTION SYSTEMS MEET THE FDA -CDRH REGULATION CFR 21 1020.40 SUBCHAPTER J FOR CABINET X-RAY SYSTEMS. THE FDA-CDRH STANDARD FOR CABINET X-RAY SYSTEMS STATES THAT RADIATION EMISSIONS WILL NOT EXCEED 500 MICRO R/HR 5 CM FROM ANY EXTERNAL SURFACE.

THE X-SCOPE X-RAY INSPECTION SYSTEMS TYPICALLY HAVE A RADIATION EMISSION READING OF LESS THAN 20 MICRO R/HR 5 CM FROM ANY EXTERNAL SURFACE.

ALL SCIENSCOPE X-SCOPE X-RAY SYSTEMS HAVE CE APPROVAL. SCIENSCOPE X-SCOPE X-RAY SYSTEMS ARE CLASSIFIED AS "CABINET X-RAY SYSTEMS" AND REQUIRE NO EXTERNAL RADIATION SHIELDING. WELDED STEEL / LEAD-STEEL CONSTRUCTION, NO VISIBLE LEAD SHIELDING.



FDA ACCESSION NUMBER: 0710198  
CE REFERENCE NUMBER: CN.CE.0402-05.09

## SCIENSCOPE International Inc.

Business Hours Monday ~ Friday (8AM~5PM PST/PDT)

Phone (800) 216-1800 Toll-Free, (909) 590-7273

FAX (909) 494-5513

Address 5751 Schaefer Ave. Chino, CA 91710

Website <http://www.scienscope.com/>

E-Mail [info@scienscope.com](mailto:info@scienscope.com)

All trademarks, service marks and logos displayed are the property of their respective holders including SCIENSCOPE, Inc. January, 2014. © SCIENSCOPE International Inc., Chino, CA



SCAN TO RFQ