

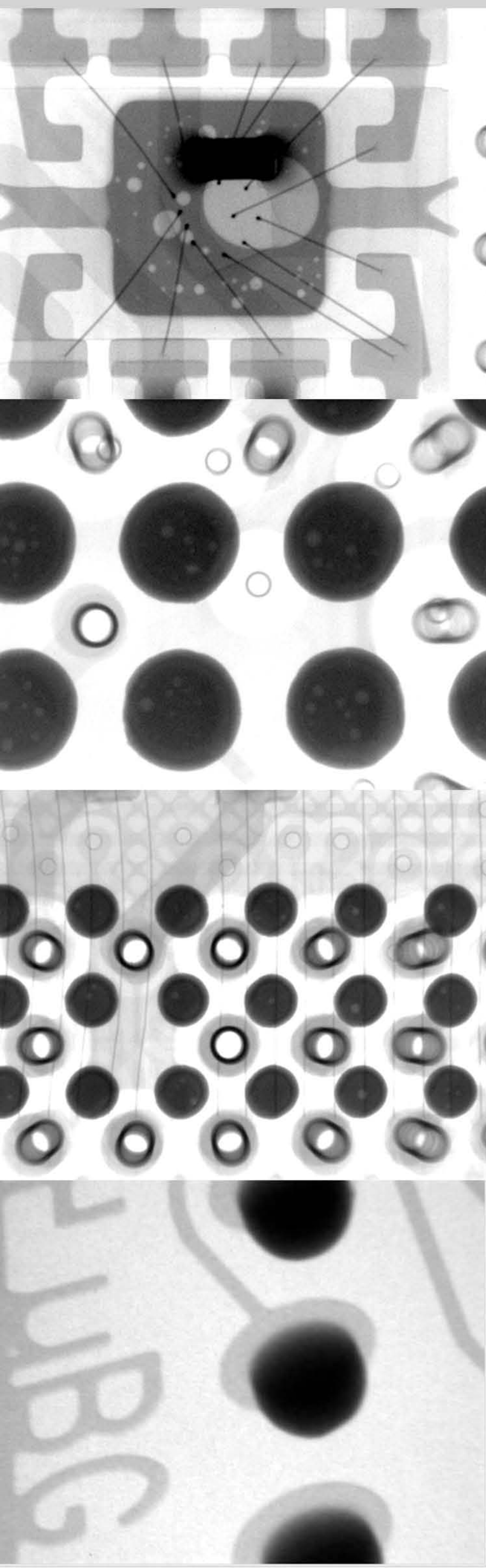
SCIENSCOPE X-SCOPE 3000

130kV, 5 Micron Microfocus X-RAY Inspection System

The X-Scope 3000 is the latest addition to the X-Scope platform. Based on the very popular X-Scope 2000, it adds a larger working area and more power using the same 130kV X-Ray source found in the more advanced X-Scope 6000



X-SCOPE 3000



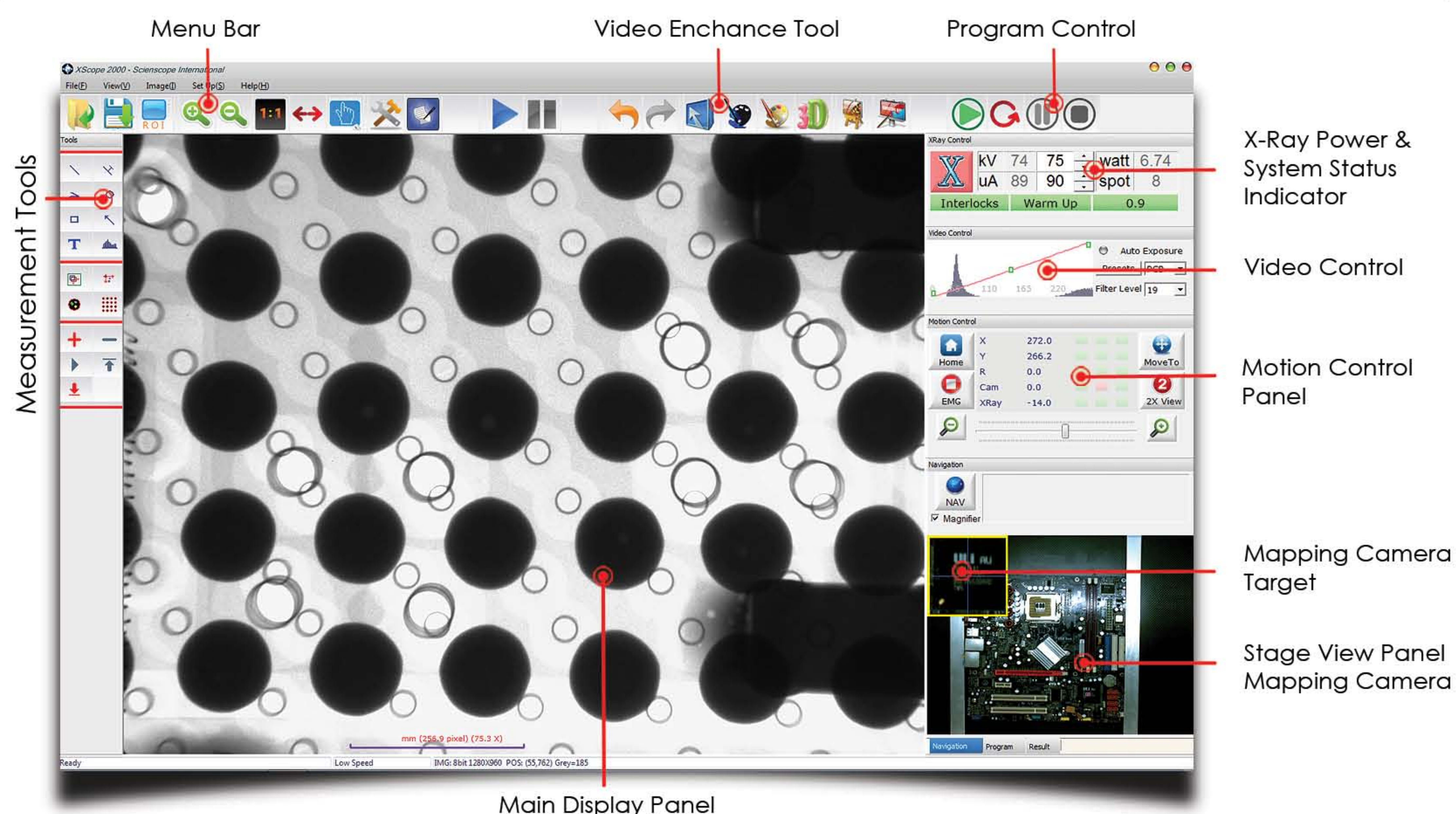
Key features

- 4"x3" high resolution CMOS digital flat panel detector
- 130kV integrated, closed x-ray source down to 5-micron spot size
- 60° oblique angle viewing
- Computer controlled XY table movement
- Computer controlled Z motion for x-ray tube and FPD
- Computer controlled kV, mA, brightness/contrast
- Simple point and click programming
- All s/w tools standard including (but not limited to):
 - BGA Void detection and automatic calculations
 - Easy macro recording for intuitive step and repeat programming
 - Various measuring tools for radius, area, perimeter, etc.
- Industrial PC with Windows 7 PRO

Industrial Applications

- Multi-layer PCB's
- BGA, QFN, wire bond, etc
- Semiconductor
- Over molded electrical connectors
- Encapsulated components
- Aluminum die casting
- Molded plastic
- Automotive assemblies
- Medical devices
- Pharmaceuticals
- Ceramics
- Agriculture

Simple to use graphical user Interface



X-Ray Tube

X-ray source:	Micro-focus, integrated (closed)
Operating voltage:	50kV-130kV
Maximum power:	16 W 50-130kV
Minimum focal spot size:	5 micron
"Real" Geometric magnification:	125x
System magnification:	1000x

Image detector

Detector type:	CMOS digital flat panel
Grey value resolution:	14 bit
Inspection area:	4" x 2.7"

Work Area

Sample table size:	25.5" x 19.5" (648mm x 495mm)
Inspection area:	25.5" x 19.5" (648mm x 495mm)
Oblique angle view:	60°

General machine specifications

Dimension (L x W x H):	53.5" x 53.5" x 66" (81" including light tower) 358mm x 1358mm x 1677mm (2057mm including light tower)
Weight:	3080 lbs (1400 kg)
Power:	110-230 VAC 50/60 Hz 300Wh. (auto switching)
Operating system:	Microsoft Windows 7 PRO/Industrial PC

Warranty

One year, parts and labor

Compliance

THE SCIENSCOPE X-SCOPE X-RAY INSPECTION SYSTEMS MEET THE FDA -CDRH REGULATION CFR 21 1020.40 SUBCHAPTER J FOR CABINET X-RAY SYSTEMS. THE FDA-CDRH STANDARD FOR CABINET X-RAY SYSTEMS STATES THAT RADIATION EMISSIONS WILL NOT EXCEED 500 MICRO R/HR 5 CM FROM ANY EXTERNAL SURFACE.

THE X-SCOPE X-RAY INSPECTION SYSTEMS TYPICALLY HAVE A RADIATION EMISSION READING OF LESS THAN 20 MICRO R/HR 5 CM FROM ANY EXTERNAL SURFACE.

ALL SCIENSCOPE X-SCOPE X-RAY SYSTEMS HAVE CE APPROVAL. SCIENSCOPE X-SCOPE X-RAY SYSTEMS ARE CLASSIFIED AS "CABINET X-RAY SYSTEMS" AND REQUIRE NO EXTERNAL RADIATION SHIELDING. WELDED STEEL / LEAD-STEEL CONSTRUCTION, NO VISIBLE LEAD SHIELDING.



FDA ACCESSION NUMBER: 0710198
CE REFERENCE NUMBER: CN.CE.0402-05.09

SCIENSCOPE International Inc.

Business Hours Monday ~ Friday (8AM~5PM PST/PDT)

Phone (800) 216-1800 Toll-Free, (909) 590-7273

FAX (909) 494-5513

Address 5751 Schaefer Ave. Chino, CA 91710

Website <http://www.scienscope.com/>

E-Mail info@scienscope.com



SCAN TO RFQ

All trademarks, service marks and logos displayed are the property of their respective holders including SCIENSCOPE, Inc. SEPTEMBER, 2015. © SCIENSCOPE International Inc., Chino, CA