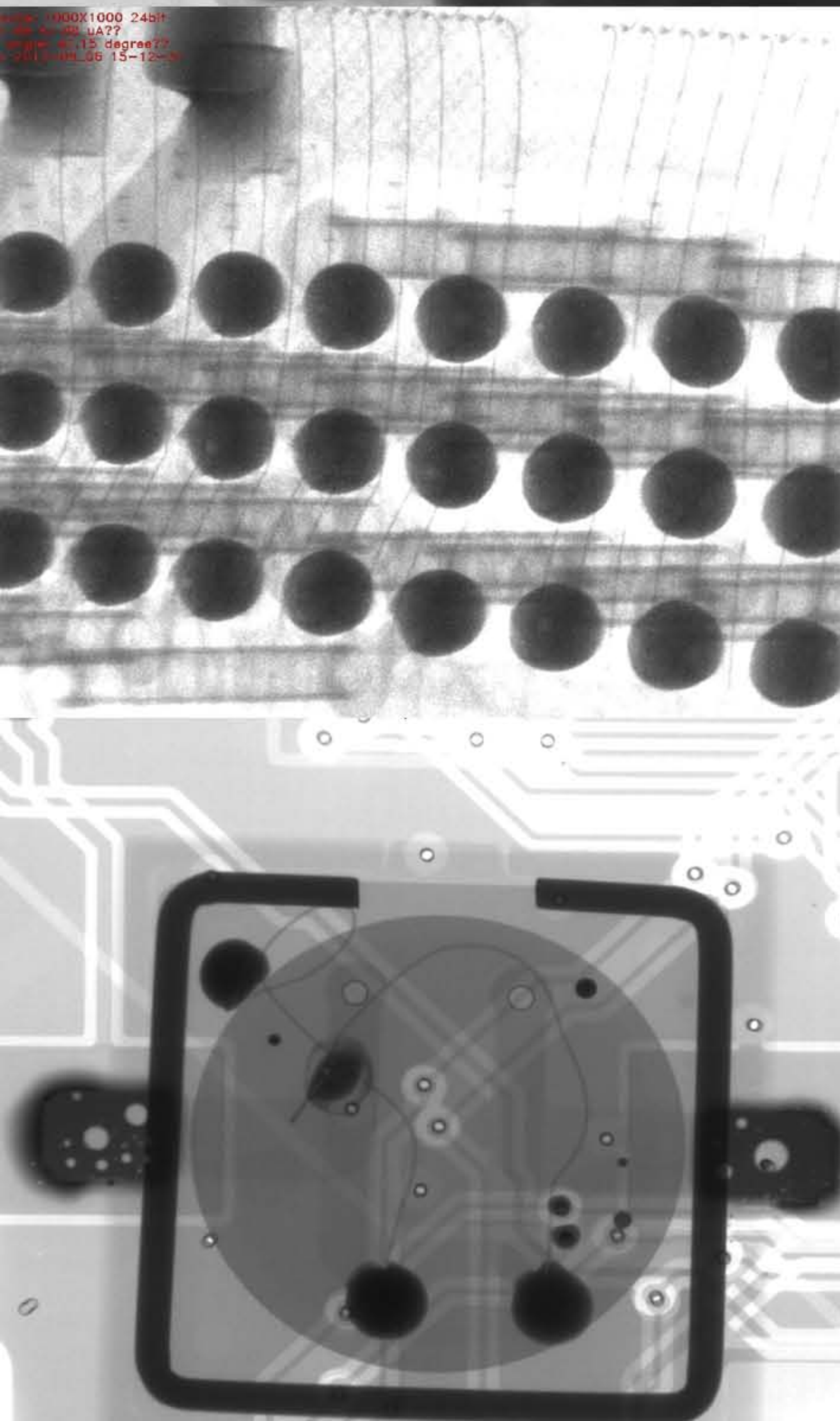
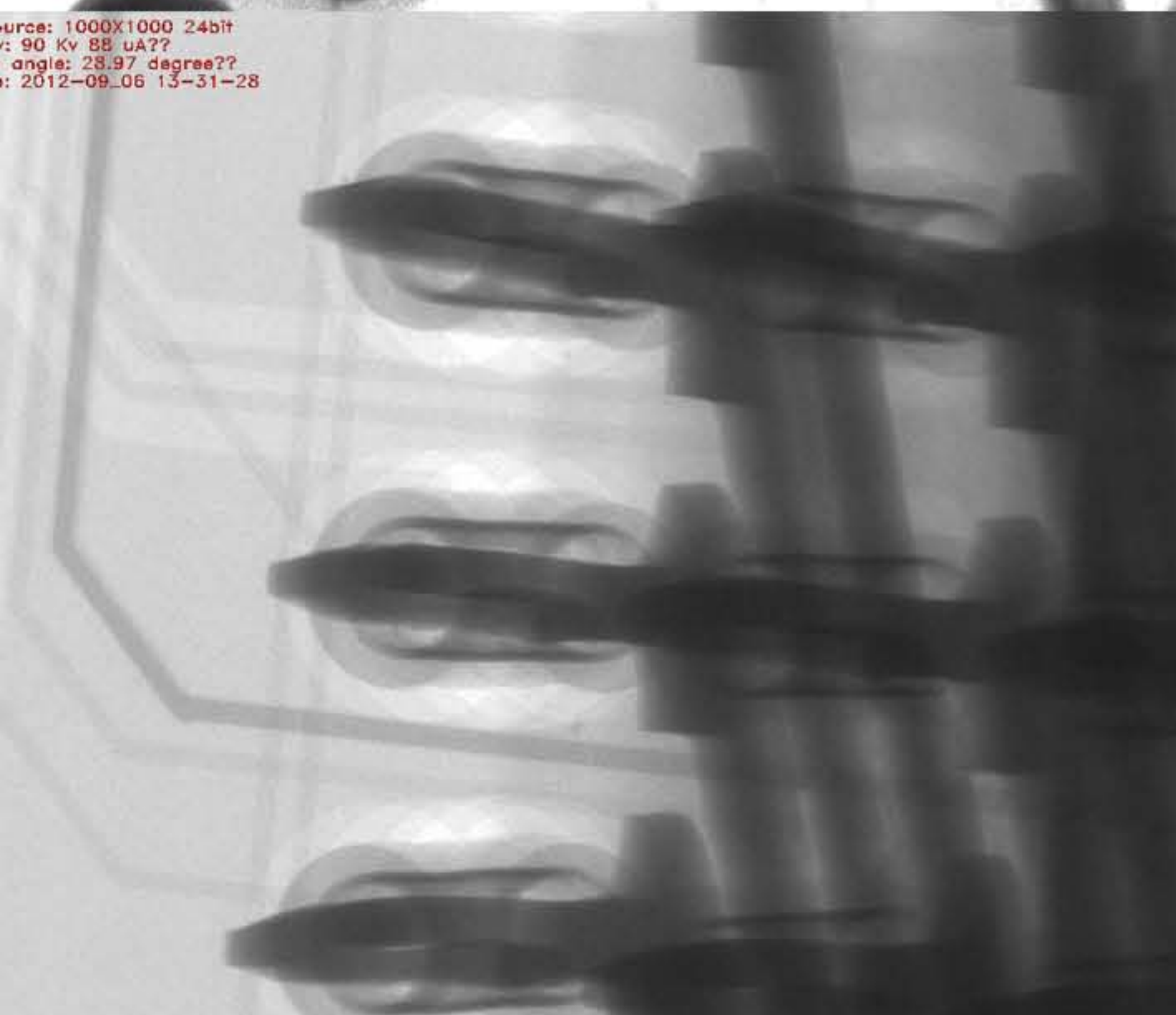
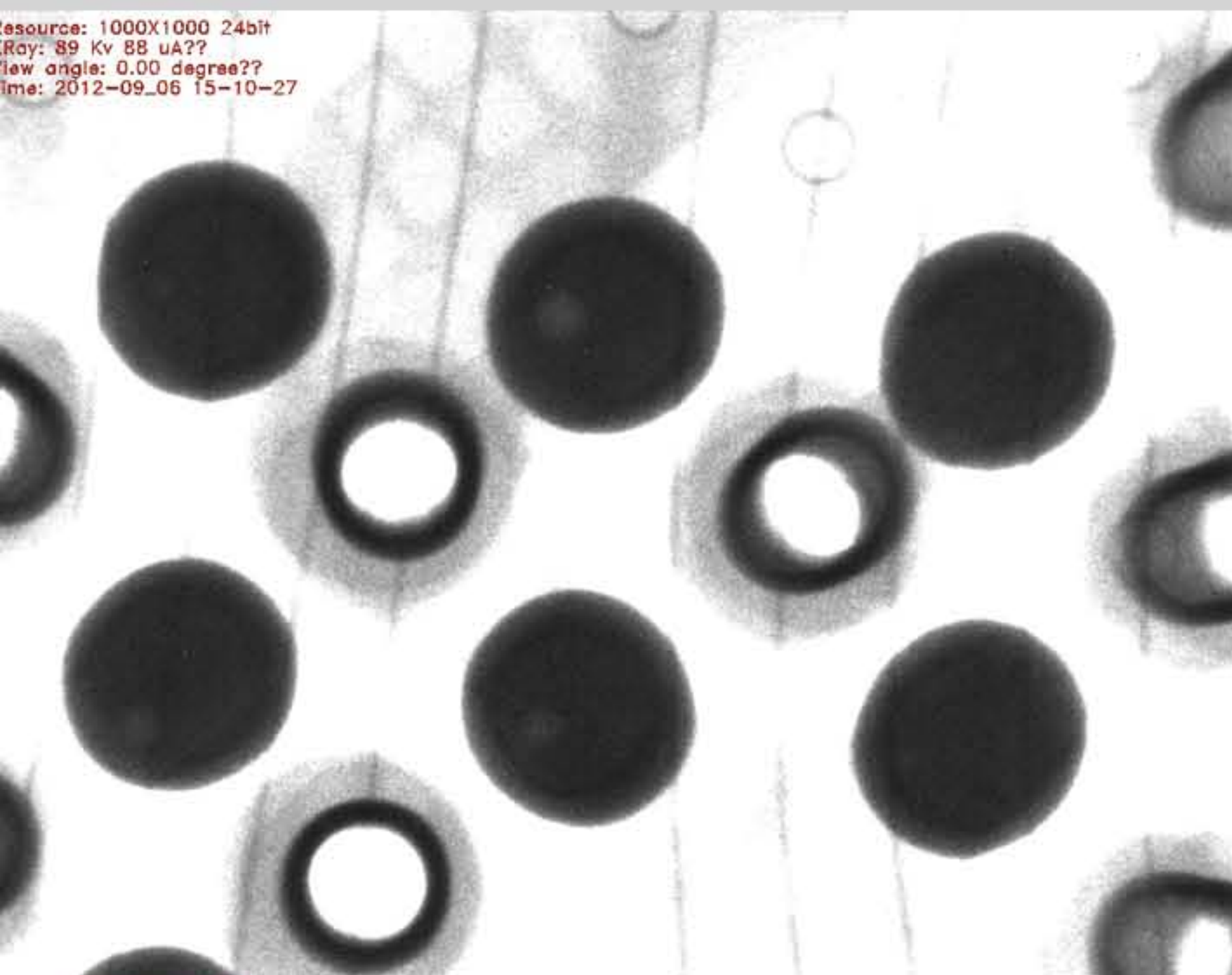


# SCIENSCOPE X-SCOPE 1800

## 90kV, 5 Micron Microfocus X-RAY Inspection System

X-SCOPE 1800 is the new addition to the X-SCOPE Series inspection systems featuring wide inspection area with tilting X-Ray tube capability.



### Key features

- 4"x3" digital flat panel detector (standard resolution)
- 90 kV- 5 micron focal spot X-Ray tube
- Z axis movement of the x-ray tube and sample stage
- Computer controlled kV and mA settings
- Computer controlled variable speed X-Y stage
- Full featured Image processing CPU with 23" LCD flat panel monitor
- Mega pixel mapping camera with zoom window - easy location and identification of faults
- Simple point and click inspection routines
- 16" x 18" stage and 50° oblique angle viewing
- Programmable computer controlled - variable speed X-Y stage

### Industrial Applications

- BGA Inspection
- Inspection of over molded electrical connectors
- Encapsulated components
- Aluminum die castings
- Molded plastic components
- Ceramics
- Aerospace components
- Electrical / mechanical components
- Electronic components
- Automotive assemblies
- Pharmaceuticals
- Agriculture
- Counterfeit components
- Cell phone battery inspection

### User Interface

Menu Bar

Video Enhance Tool

Program Control

X-Ray Control

kV	74	75	watt	6.74
uA	89	90	spot	8
Interlocks	Warm Up	0.9		

Video Control

Motion Control

X	272.0		
Y	266.2		
R	0.0		
Cam	0.0		
XRy	-14.0		

Navigation

NAV

Magnifier

Mapping Camera Target

Stage View Panel Mapping Camera

Measurement Tools

Main Display Panel

X-Ray Power & System Status Indicator

Video Control

Motion Control Panel

Mapping Camera Target

Stage View Panel Mapping Camera



## X-Ray Tube

Tube Style	Closed Type
Tube Voltage	90kV / 80kV
Tube Current	0.256mA / 0.18mA
Focal Spot Size	5 Micron / 10 Micron
Tube Cooling	Forced Air
Geometric Magnification	50X
System Magnification	500X

## Digital Flat Panel X-Ray Detector

Speed	30 FPS
Grayscale	14-bit (16,384 shades of grayscale)
Resolution	99 $\mu$ m (1.2MP) - high quality 135 $\mu$ m (1MP) - standard

## X-Ray Cabinet

Dimension	1100mm (L) x 1100mm (W) x 1400mm (H) 43.3" (L) x 43.3" (W) x 55.1" (H)
Sample Table Size	400mm x 500mm 15.7" x 19.6"
Detector Tilt	+50 degree
Sample Table Movement	X Axis: 460mm, Y Axis: 310mm, Z Axis: 240mm X Axis: 18.1", Y Axis: 12.2", Z Axis: 9.4"
Weight	800 kg (1764 lbs) Steel - Lead - Steel welded construction

## Power

Automatic switching power supply	110 - 230 VAC 50/60 Hz
----------------------------------	------------------------

## Computer

Operating System	Microsoft Windows 7 PRO
------------------	-------------------------

## Warranty

One year, parts and labor

## Compliance

THE SCIENSCOPE X-SCOPE X-RAY INSPECTION SYSTEMS MEET THE FDA -CDRH REGULATION CFR 21 1020.40 SUBCHAPTER J FOR CABINET X-RAY SYSTEMS.THE FDA-CDRH STANDARD FOR CABINET X-RAY SYSTEMS STATES THAT RADIATION EMISSIONS WILL NOT EXCEED 500 MICRO R/HR 5 CM FROM ANY EXTERNAL SURFACE.

THE X-SCOPE X-RAY INSPECTION SYSTEMS TYPICALLY HAVE A RADIATION EMISSION READING OF LESS THAN 20 MICRO R/HR 5 CM FROM ANY EXTERNAL SURFACE.

ALL SCIENSCOPE X-SCOPE X-RAY SYSTEMS HAVE CE APPROVAL. SCIENSCOPE X-SCOPE X-RAY SYSTEMS ARE CLASSIFIED AS "CABINET X-RAY SYSTEMS" AND REQUIRE NO EXTERNAL RADIATION SHIELDING. WELDED STEEL / LEAD-STEEL CONSTRUCTION, NO VISIBLE LEAD SHIELDING.



FDA ACCESSION NUMBER: 0710198  
CE REFERENCE NUMBER: CN.CE.0402-05.09

## SCIENSCOPE International Inc.

Business Hours Monday ~ Friday (8AM~5PM PST/PDT)

Phone (800) 216-1800 Toll-Free, (909) 590-7273

FAX (909) 494-5513

Address 5751 Schaefer Ave. Chino, CA 91710

Website <http://www.scienscope.com/>

E-Mail [info@scienscope.com](mailto:info@scienscope.com)

All trademarks, service marks and logos displayed are the property of their respective holders including SCIENSCOPE, Inc. January, 2014. © SCIENSCOPE International Inc., Chino, CA



SCAN TO RFQ